



# Migration study of large mammals at highways in Slovakia



# Introduction

Company working on line structures since 1992

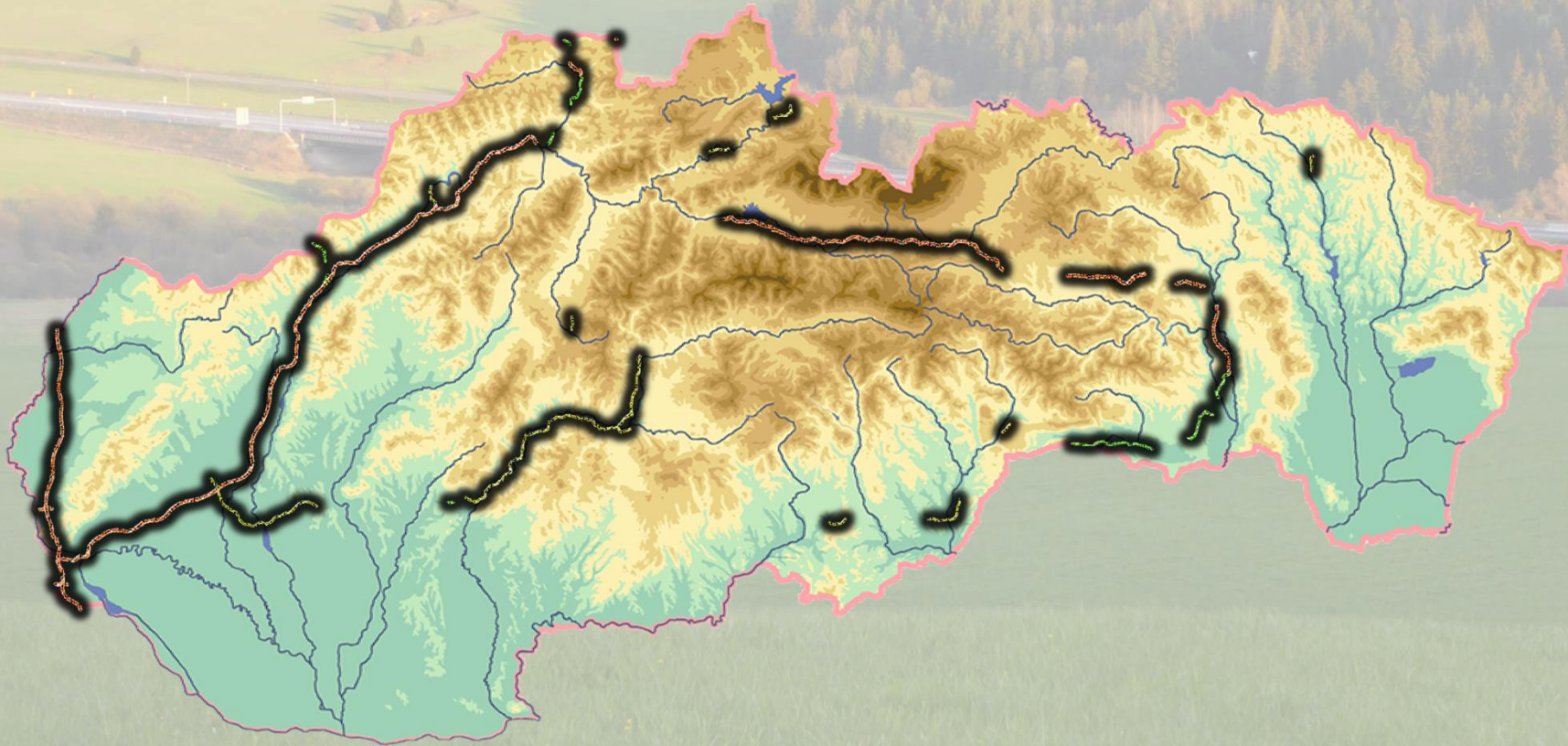
Studio of Ecology is a separate part of the company for 16 years

Focused on:

- Preparation of the EIA documentation in this area of work in the CR and SR
- Preparation and executing of monitoring the impacts of line structures on the environment
- Elaboration of migration studies
- Realization of research projects focused on the problems of fragmentation and migration on the huge line structures
- Application of GIS in this issues

# Migration study for needs of NDS

- Improving migration of selected species of animals on operated motorways and expressways till 31.12.2012

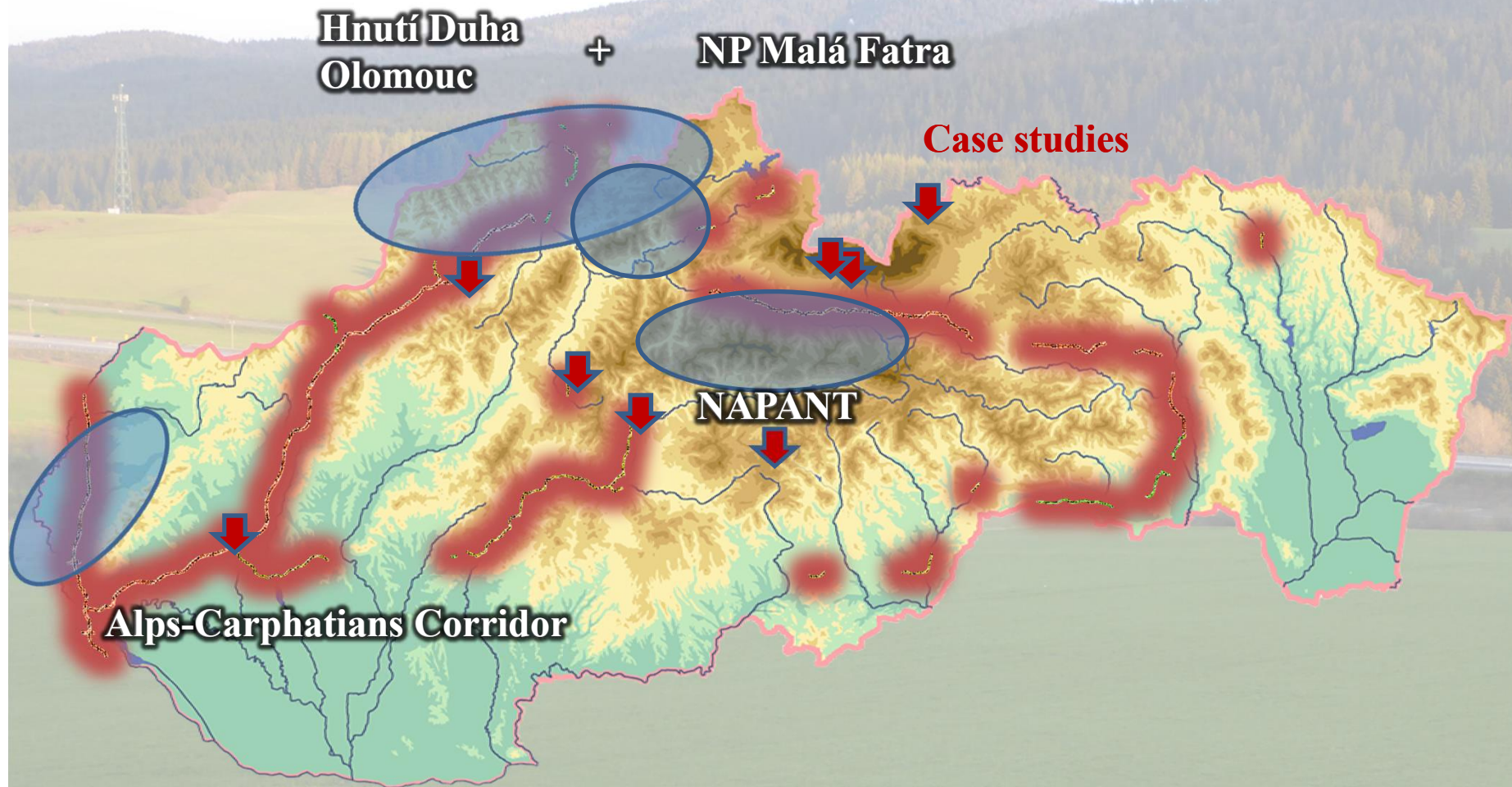


# Reasons for assignment

- Escalation of animal-vehicle collisions on the mentioned roads, with a negative impact on animal population and human activities



# Reasons for assignment



- Uncomplet identification of all main corridors for wildlife in Slovakia
- Nothing comprehensive to use at national scale.



**Objective of study**  
**suggest actions to reduce the barrier effect**

**improvement of landscape connectivity**



**nature conservation**

**IN**

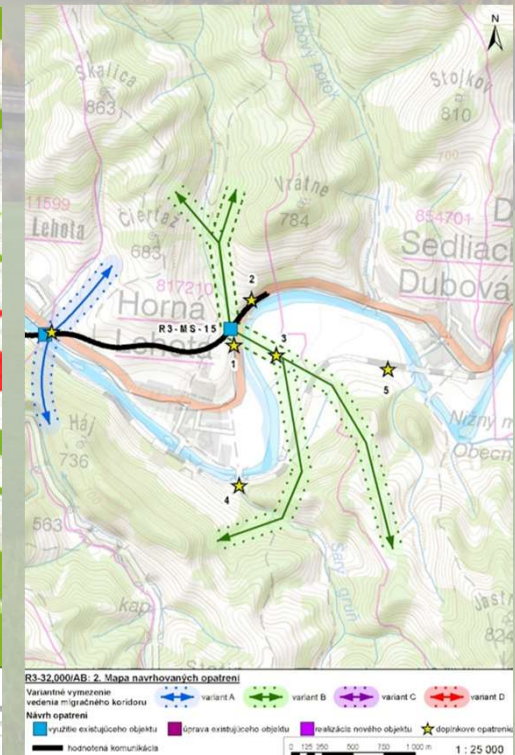
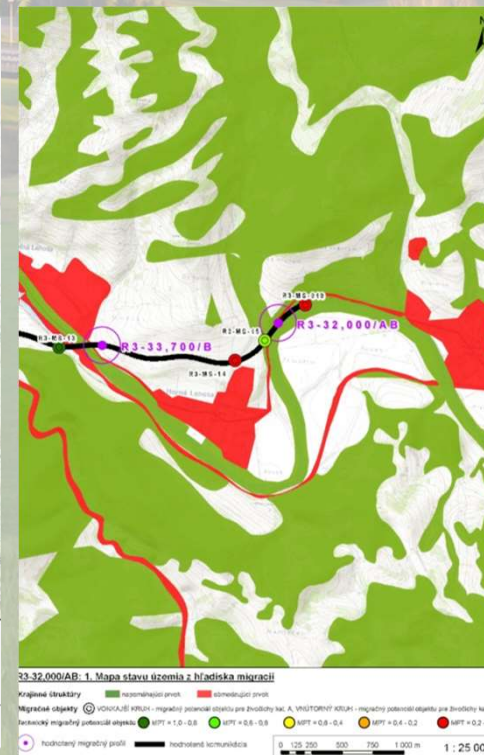
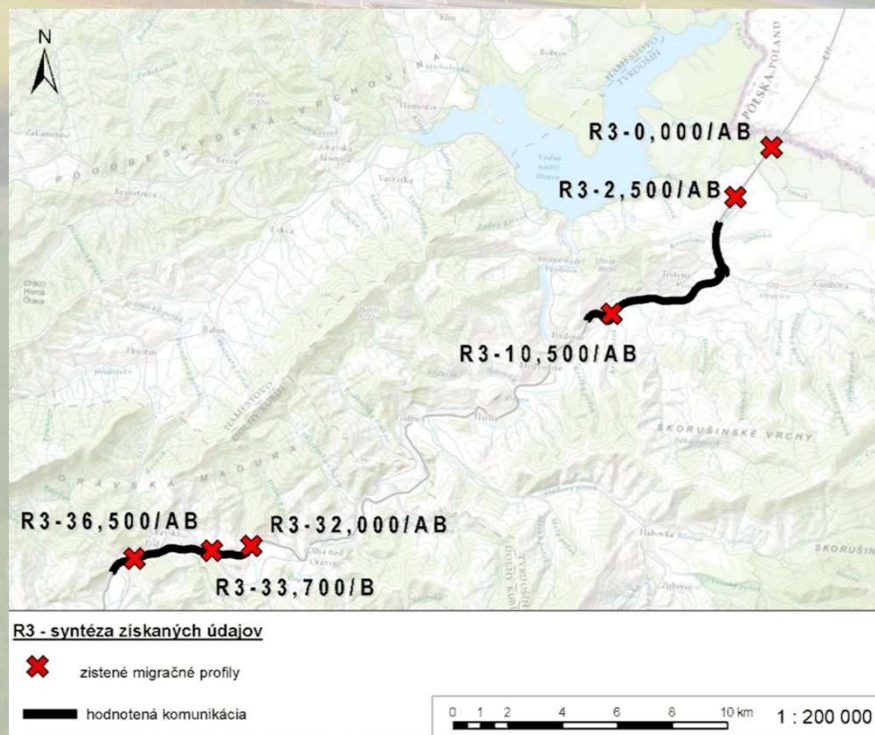
**transportation security**

# Input data

- Collisions data (from police, hunters, state nature conservation of Slovakia)
- Status of animals (numbers, areas, ecology, etc.)
- Map materials for spatial planning (CORINE, LANDEP, protected areas, regional and local ecological network, zoning (land) plans, etc.)
- Field survey at three levels!
- Technical norms and approved methodology
- Publications

# Methodology

- Defining the animals core areas and the main migration corridors around solved roads
- Evaluate the significance of "migration profile" based on the input data
- Evaluation of road permeability
- The synthesis of the above and draft measures






# Results of study

- Comprehensive base for the design and later implementation of concrete measures to improve the situation: highway vs. animal migration needs
- processing will be completed in the final report in 05/2017

## Beside it

- Mitigate impact of transport on the environment
- Contribute to the knowledge of migration of fauna in Slovakia (in the Carpathians)
- Combinate technical (constructions) and conservation regulations



Interesting facts and examples  
about large carnivores

# Large carnivores at highways

- Using also smaller structures, mainly it depend on position and time
- Highly motivated migrations
- Collisions are often only early after opening new section



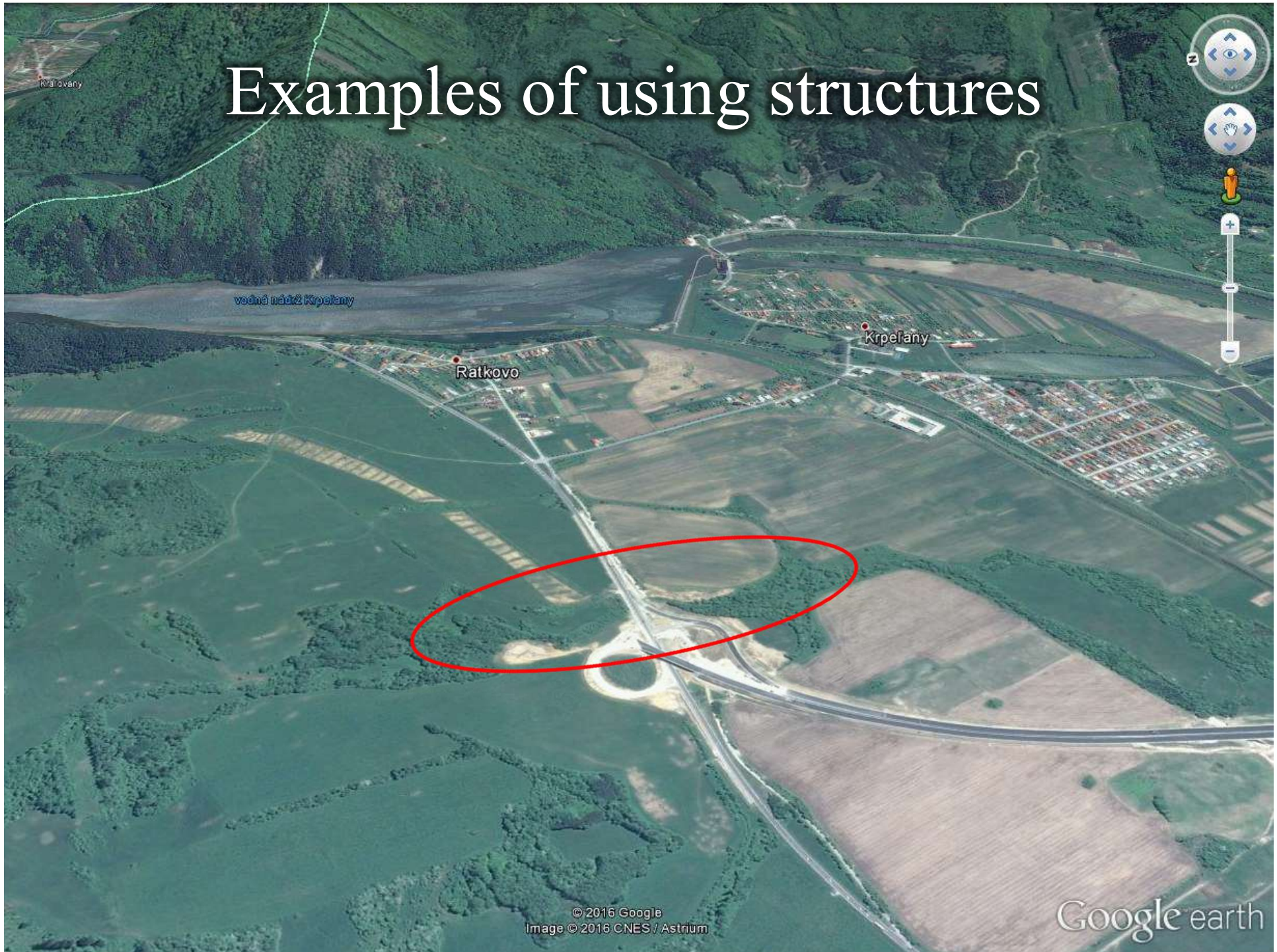
# Examples of using structures



# Footprint of wolf



# Examples of using structures



# Examples of using structures



# Footprint of bear





# Footprints of wolf on construction site



Likavka

© 2016 Google  
Image © 2016 DigitalGlobe

Google earth

Dátum snímky: 8/27/2015 49°06'21.13" S 19°19'02.83" V výš. 616 m výška pohľadu 4.90 km

Thank you!

