



ConnectGREEN Update July 2021

2nd CNPA Round Table
19 July 2021, 10:00-12:00 CEST, online

© Rastislav Stanik

ConnectGREEN key facts



Restoring and managing ecological corridors in mountains as the green infrastructure in the Danube basin

June 2018 – October 2021

~2.5 Mio EUR, co-funded by ERDF, IPA

13 Project Partners, Lead: WWF-RO

10 Associated Partners (Ministries, Protected Area Networks)

Romania, Austria, Czech Republic, Hungary, Serbia, Slovakia, Ukraine, Montenegro, France

Carpathian Convention



© Rastislav Stanik

Project co-funded by European Union funds (ERDF, IPA)

www.interreg-danube.eu/connectgreen

ConnectGREEN

- Methodology for identifying eco-corridors
- Guidelines on reducing conflicts of nature conservation and spatial planning practices
- Action Plans for mitigating threats to corridors in the pilot areas by using active stakeholder engagement processes
- Capacity building for protected areas' staff, e-learning tool, international conference
- Embedding into policy – Carpathian Convention, multi-sectoral meetings
- Transferability strategy for best practices in mountainous areas

ConnectGREEN in a nutshell

NEW! Additional Work Package:

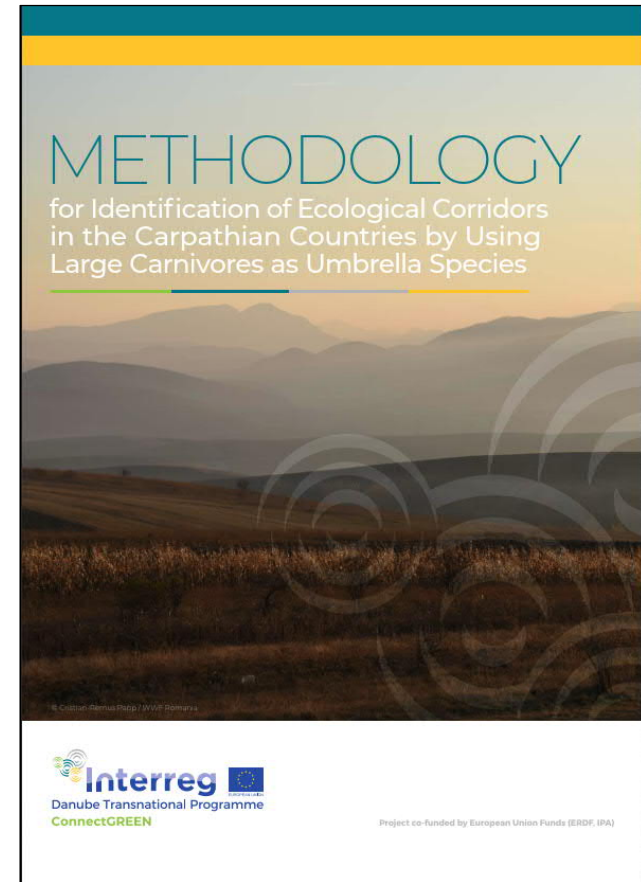
- Enhancing cross-sectoral cooperation at regional Carpathian level and beyond

NEW! Additional Outputs

- National roadmaps on integrating ecological corridors in spatial planning
- Detailed report on the possibilities to improve the EIA Directive

Methodology for identifying ecological corridors - modelling

1. Data collection, preparation & harmonization
2. Habitat suitability modelling
Maxent (Phillips et al. 2006)
3. Definition of core areas & stepping stones
4. Modelling habitat connectivity
Circuit Theory (McRae 2008)
5. Identification of migration corridors
Least Cost Path approach (Linkage Mapper, McRae et al. 2012)
6. Expert discussion/approval

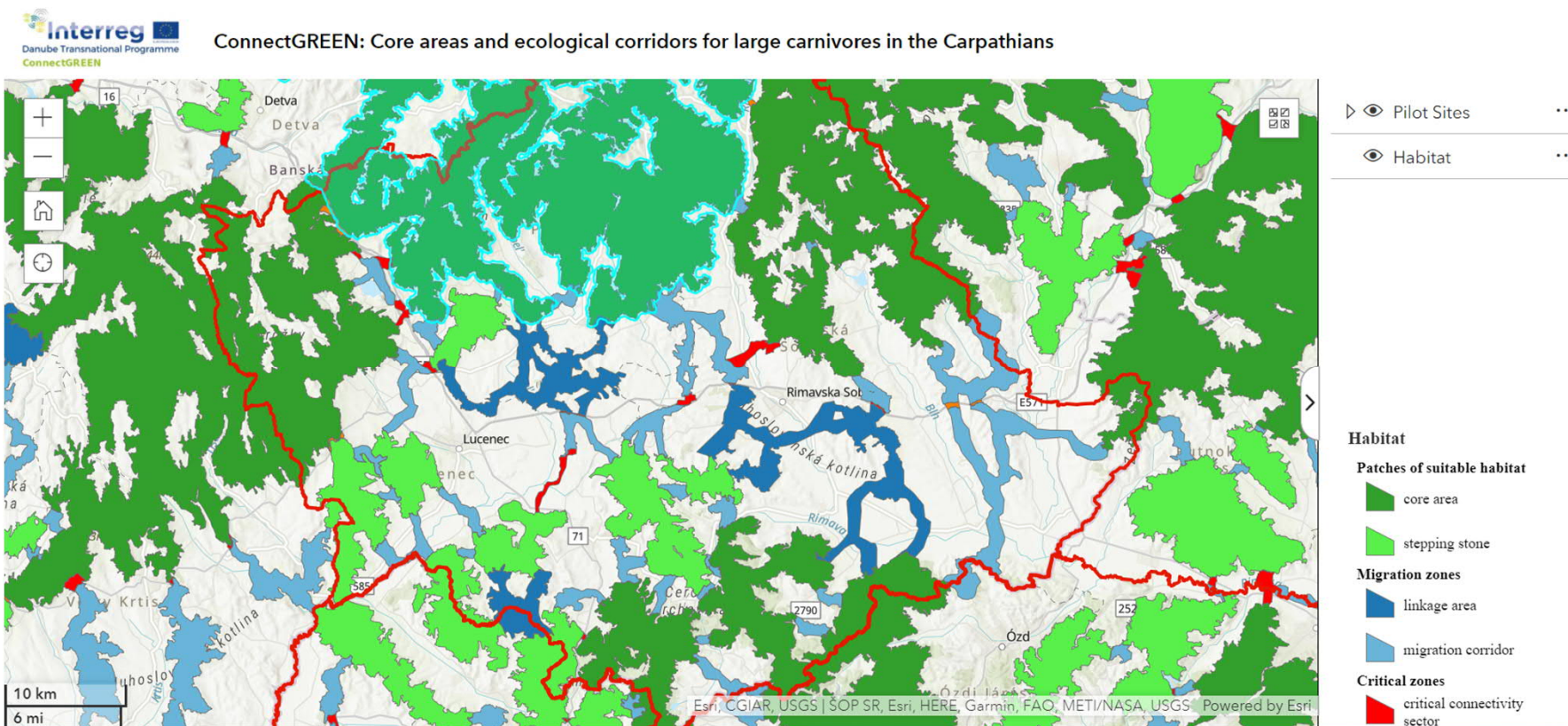


Result



<https://experience.arcgis.com/experience/03da1f6f67404518b3efe0d11f444e5a>

Result - detail



<https://experience.arcgis.com/experience/03da1f6f67404518b3efe0d11f444e5a>

Action Plans for mitigating threats to corridors in the pilot areas

Experts adapt/modify/verify the model through

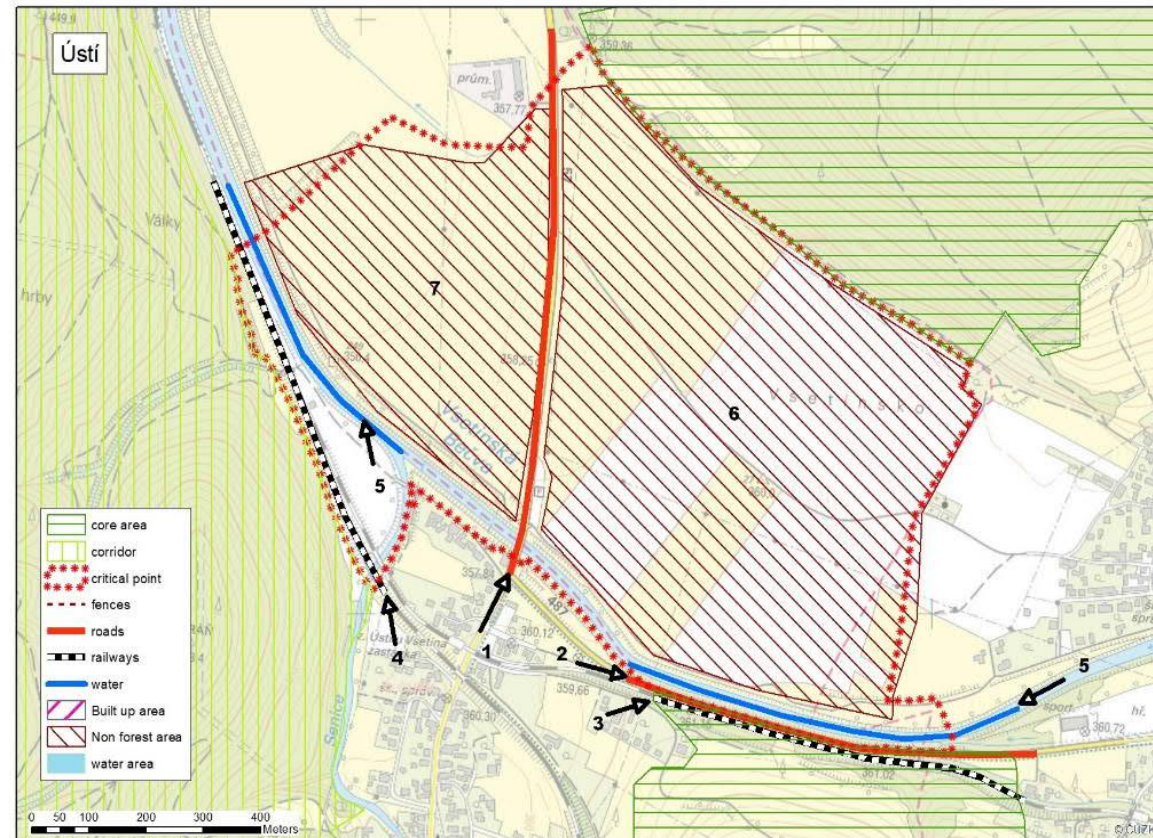
- Field monitoring of species – occurrence and fauna mortality
- Barrier assessment in the field (1-7)
 - Roads, railways, fences, waterways, non-forested areas, built up areas

Methods used:

- Online applications, camera traps, animal track tracing, expert assessment, etc.

RESULT

Map as basis for the development of concrete measures



© Nature Conservation Agency of the Czech Republic

Guidelines on reducing conflicts in corridor areas

Supports spatial planners and nature conservationists for finding integrative solutions that harmonize interests between nature protection and different land use types

- INVITATION to Workshop
20th July 2021, 9.00-13.00
CEST



Capacity building

E-learning Tool for students

Website link

3rd CNPA Conference
*"Protected Areas – Cornerstones
of Ecological Connectivity in the
Carpathians and beyond"*
in Visegrad, Hungary
28-30 September 2021

Website [link](#)



©Tomas Hulik

Collaboration with Carpathian Convention

International Action Plan on Conservation of Large Carnivores and Ensuring Ecological Connectivity in the Carpathians - [link](#)
Collaboration with Carpathian Convention WG on Biodiversity, adopted at COP6

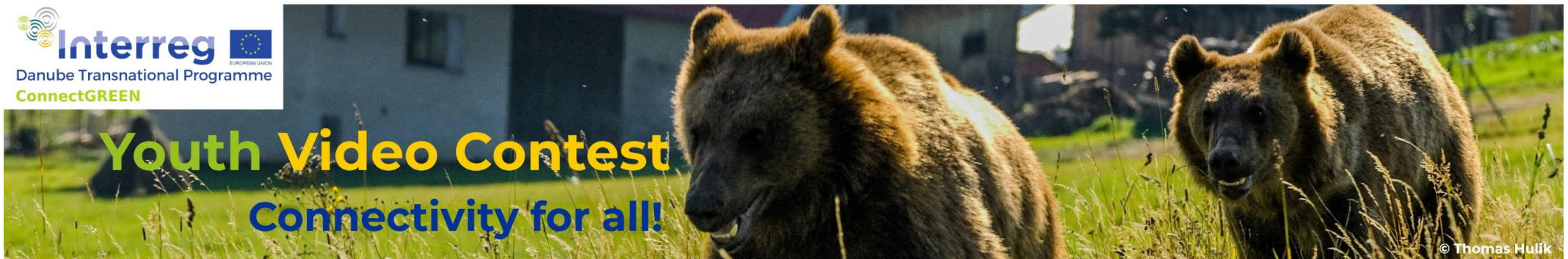
CNPA Steering Committee & Centralparks



Youth Video Contest



<http://www.interreg-danube.eu/approved-projects/connectgreen/section/youth-video-contest>



Project co-funded by European Union funds (ERDF)

www.interreg-danube.eu/savegreen

Contacts

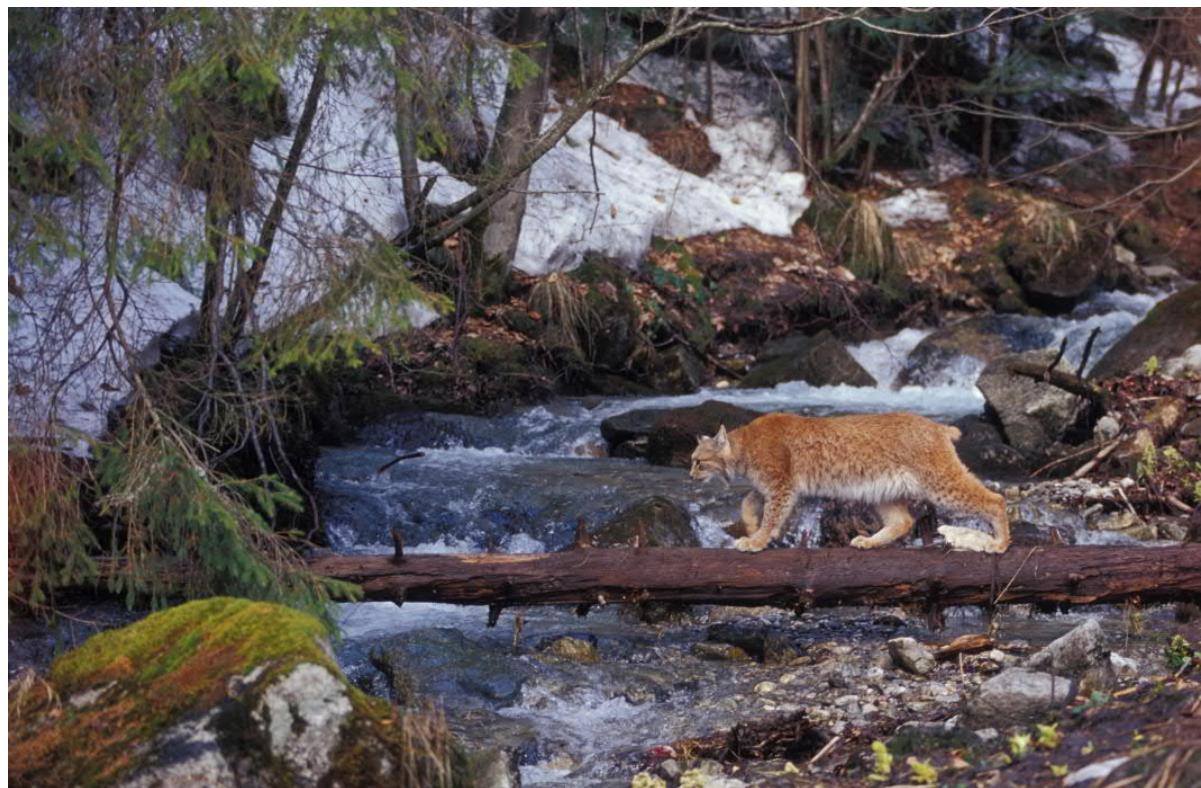
Hildegard Meyer, Project Manager, WWF Central and Eastern Europe, hmeyer@wwfcee.org, +43 650 276 3764

Cristian-Remus Papp, Project Manager, WWF Romania, cpapp@wwf.ro, +40 745 891 929

Irene Lucius, Supervisor, Conservation Director, WWF Central and Eastern Europe, ilucius@wwfcee.org, +43 676 842 728 215

Christophe Janz, Project officer, WWF Central and Eastern Europe, cjanz@wwfcee.org, +43 677 627 906 44

www.interreg-danube.eu/connectgreen



© Tomas Hulík