



Successful Wildlife Crime Prosecution in Europe

LIFE19 GIE/BG/000846 SWIPE Project

13th Meeting of the Carpathian Convention
Working Group on Biodiversity

11–12 April 2022, ONLINE MEETING

Cristian-Remus Papp,

WWF Romania

Wildlife and Landscapes National Manager

SWIPE

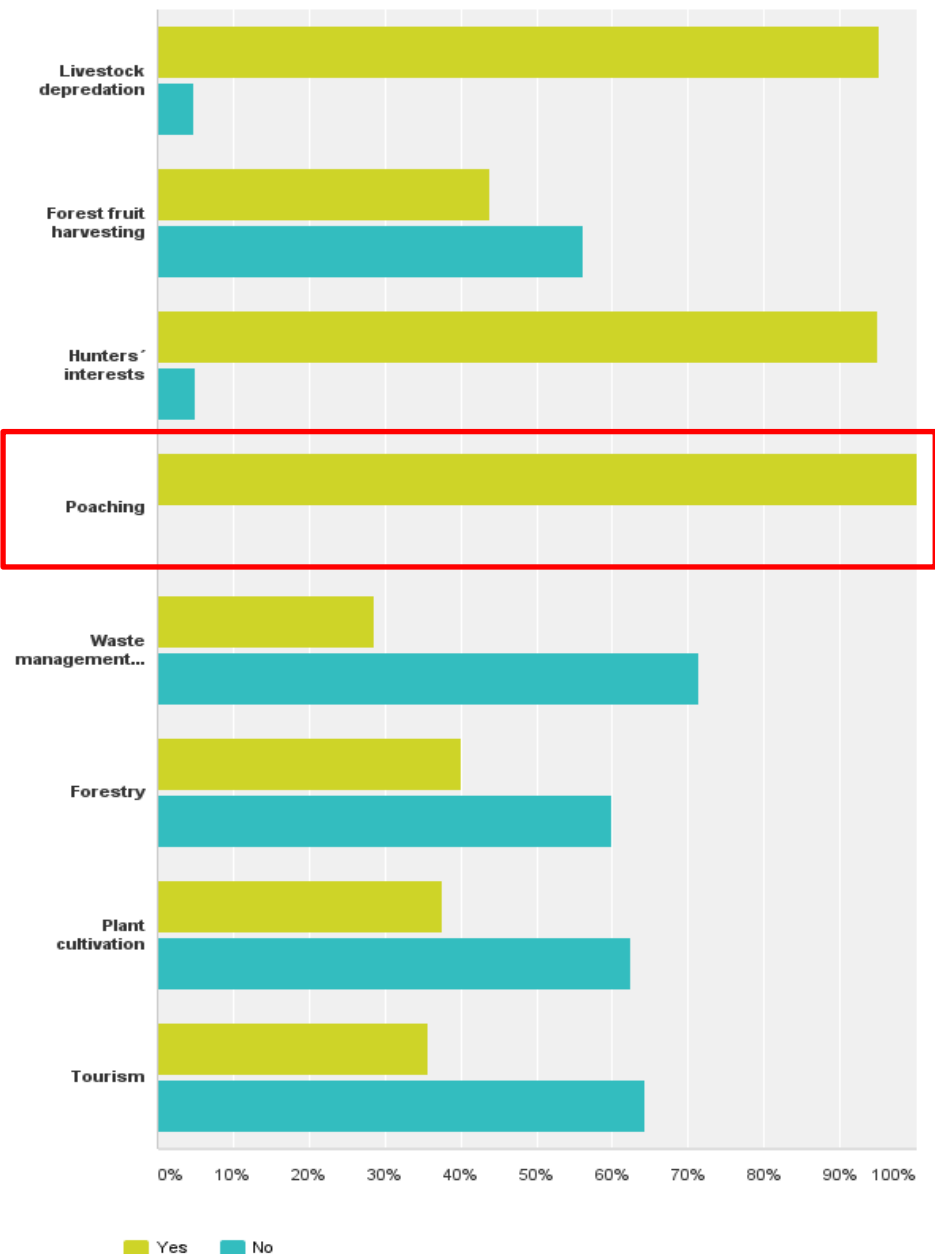
Successful
Wildlife Crime
Prosecution
in Europe.



What is wildlife crime?

MAIN ISSUES

Main threats to LCs in the Carpathians (questionnaire, 2016)





FAUNA & FLORA
INTERNATIONAL

TRAFFIC
the wildlife trade monitoring network

Pravosudna
akademija



LIFE19 GIE/BG/000846 SWIPE Project
Successful Wildlife Crime Prosecution in Europe

MAIN ISSUES



20S

20S



FAUNA & FLORA
INTERNATIONAL

TRAFFIC
the wildlife trade monitoring network

Pravosudna
akademija

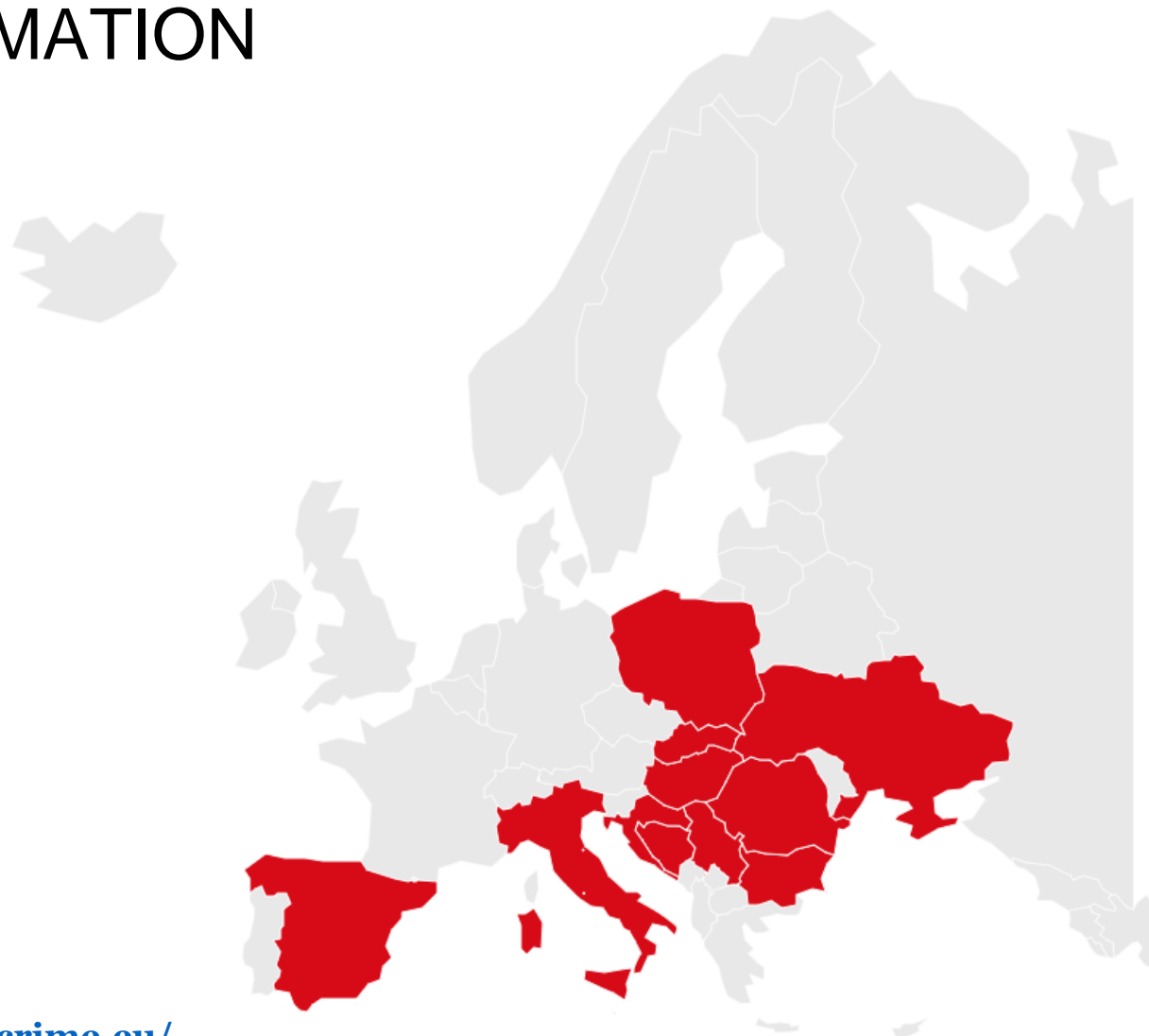


Successful Wildlife Crime Prosecution in Europe

MAIN INFORMATION

Territorial scope (11 countries):

- EU countries - Romania, Slovakia, Hungary, Poland, Bulgaria, Croatia, Spain, Italy
- Non-EU - Serbia, Bosnia and Herzegovina, Ukraine



<https://stopwildlifecrime.eu/>



FAUNA & FLORA
INTERNATIONAL

TRAFFIC
the wildlife trade monitoring network

Pravosudna
akademija



Successful Wildlife Crime Prosecution in Europe

MAIN INFORMATION

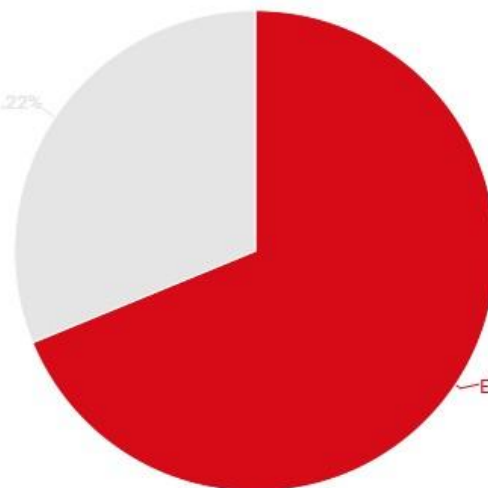
Project length: 01/09/2020 - 31/08/2023

Leading partner: WWF Bulgaria

Associated beneficiaries (12): State Attorney's Office of the Republic of Croatia, Flora & Fauna International, Judicial Academy Croatia, WWF Adria in Serbia, WWF Adria, WWF Spain, WWF Hungary & TRAFFIC, WWF Italy, WWF Poland, WWF Romania, WWF Slovakia, WWF Ukraine

Total budget: aprox. 4.5 million Euro

Other funding (€1,446,157) 31.22%

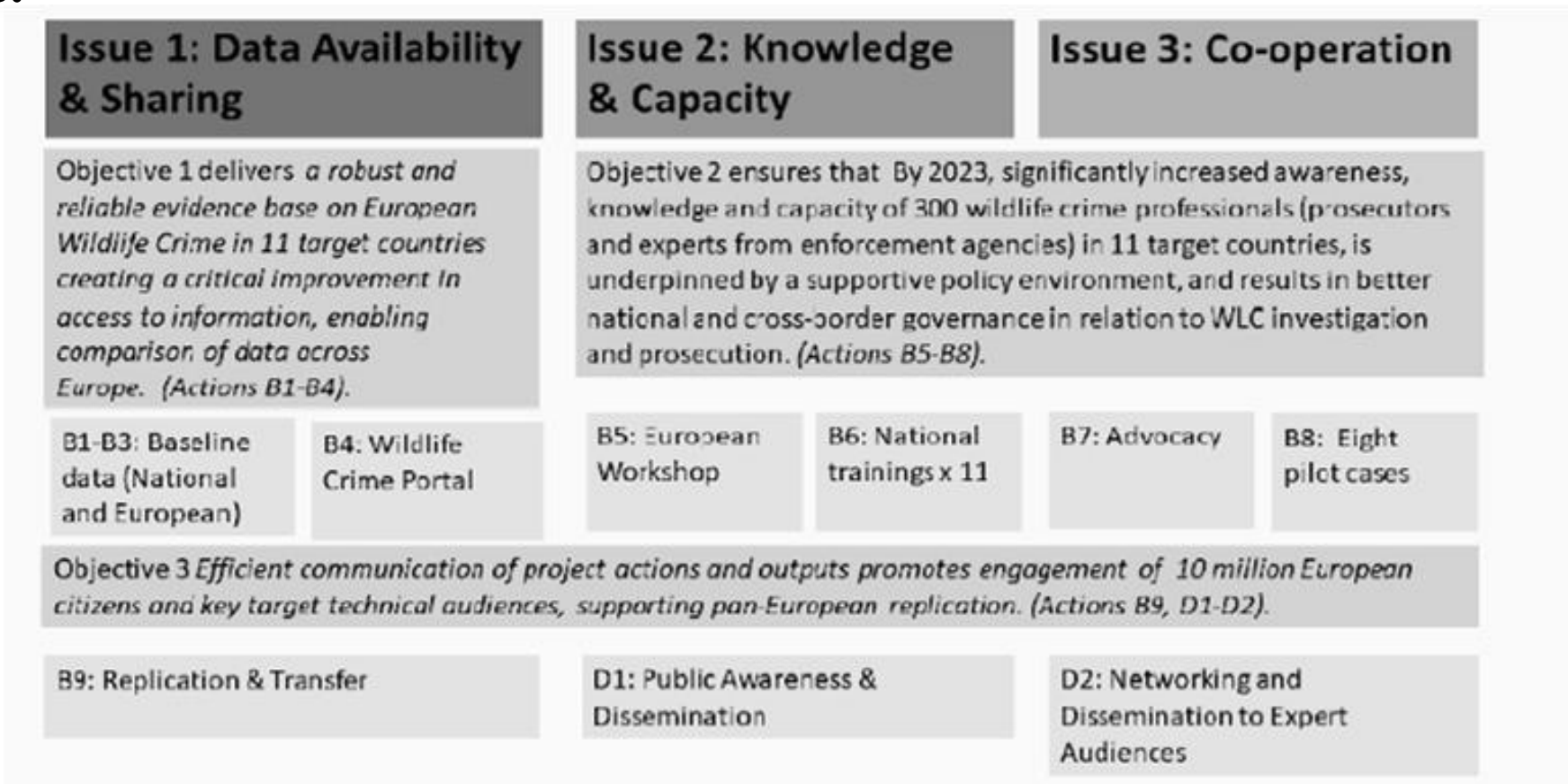


EU financial contribution (€3,186,175) 68.78%

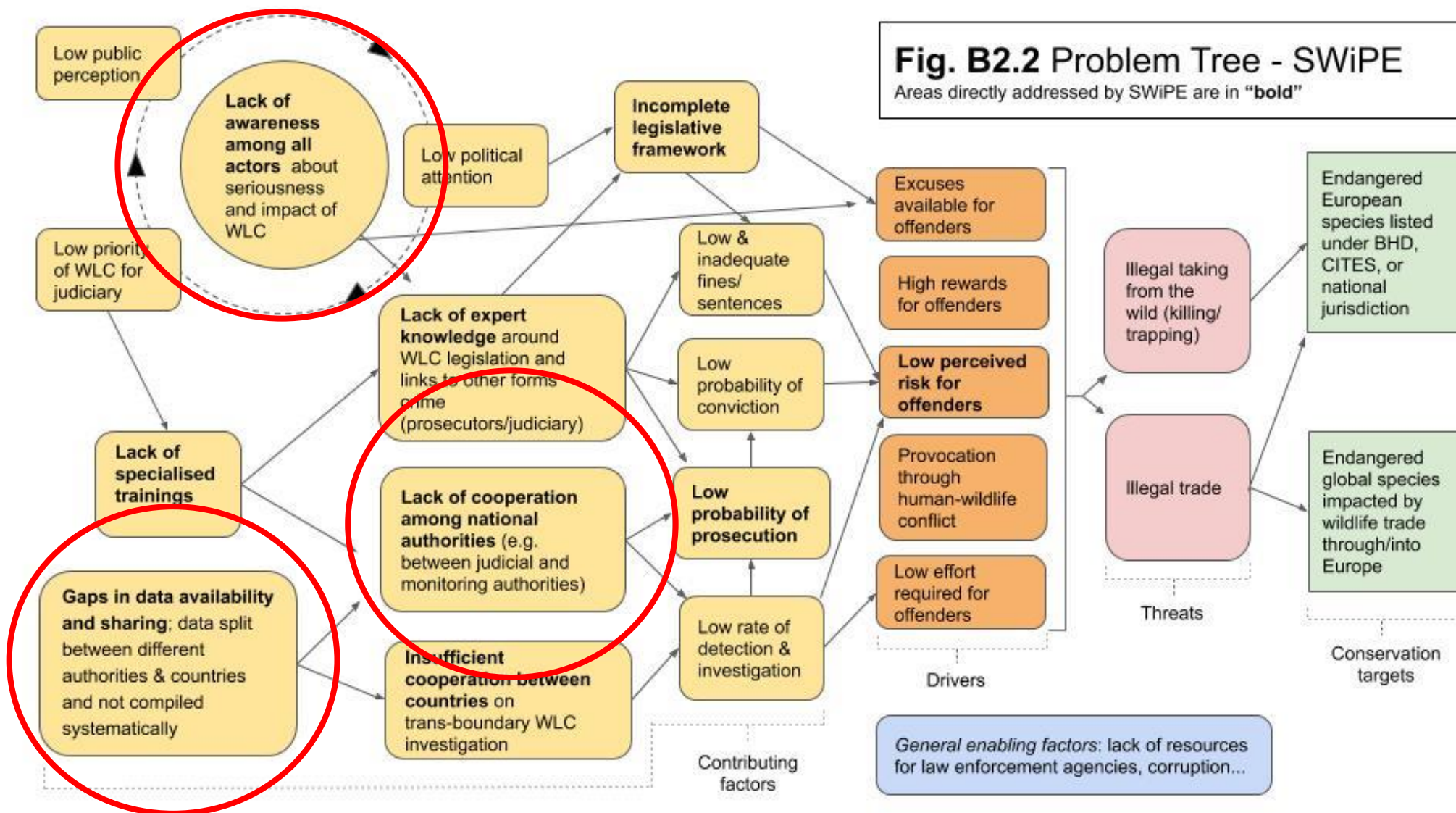


OBJECTIVES

SWiPE aims to discourage and ultimately reduce illegally killed European wildlife, supporting the recovery of threatened European biodiversity and the health of ecosystems.



AREAS COVERED BY SWiPE





FAUNA & FLORA
INTERNATIONAL

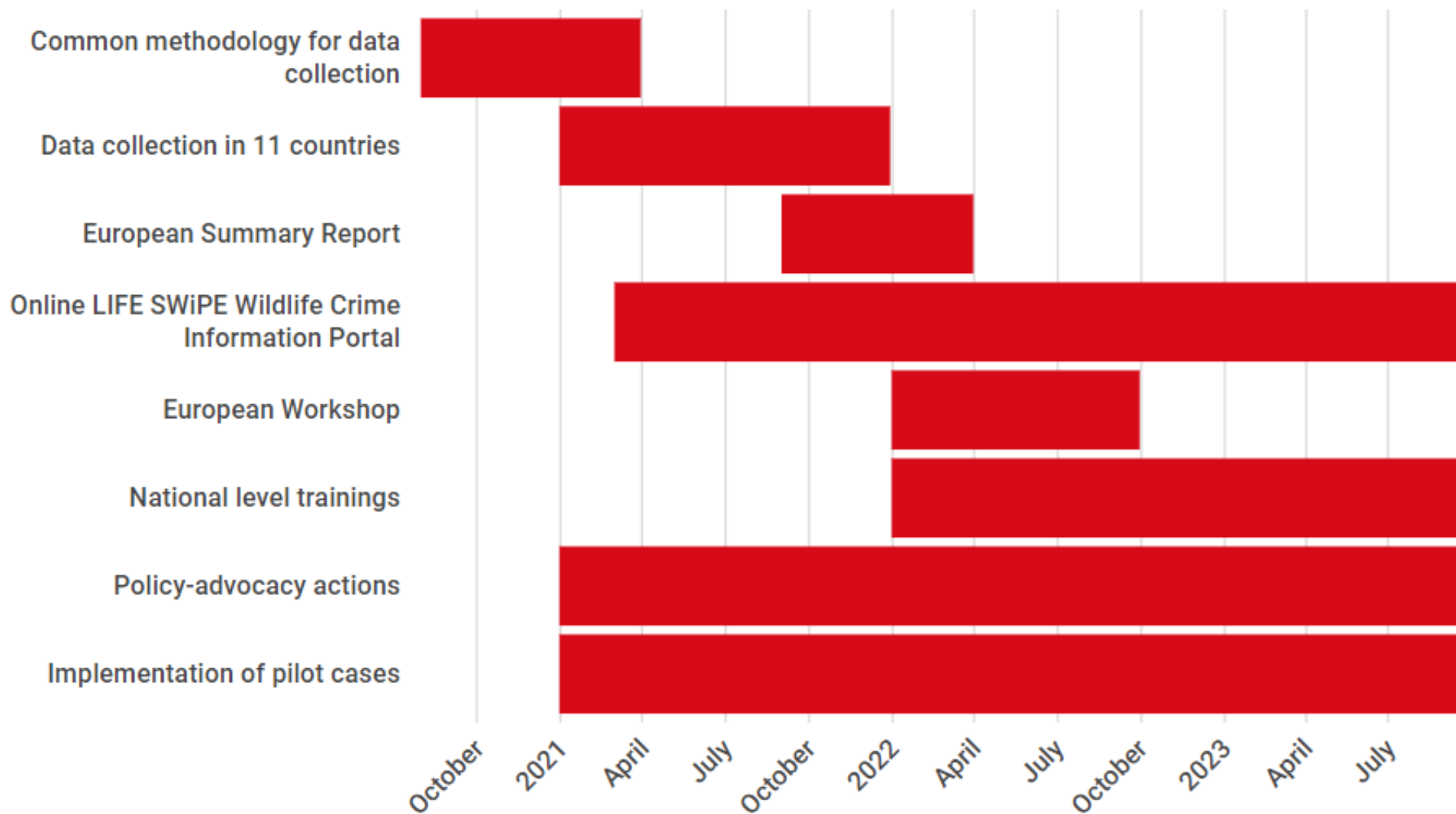
TRAFFIC
the wildlife trade monitoring network

Pravosudna
akademija



LIFE19 GIE/BG/000846 SWIPE Project
Successful Wildlife Crime Prosecution in Europe

PROJECT ACTIONS





TARGET AUDIENCES & STAKEHOLDERS

Primary target audience, with the highest relevance for addressing the problem being: 170 national and regional prosecutors, 220 national and regional enforcement officials and 210 individuals from national CSOs, other WLC experts, staff of national ministries, judges or judicial academies together.

Secondary target audiences have been selected for their potential to support and advocate for increased action, and include 10 mio European citizens and policy makers and decision makers.

Stakeholders - entities that have an active interest in (or are affected by) the issue targeted by the project, including European strategic cooperation partners and the ones participating actively in the project reference panel (ENPE, UNEP, OCLAESP (French Gendarmerie), EUFJE, Birdlife).





FAUNA & FLORA
INTERNATIONAL

TRAFFIC
the wildlife trade monitoring network

Pravosudna
akademija



LIFE19 GIE/BG/000846 SWIPE Project
Successful Wildlife Crime Prosecution in Europe

EXPECTED RESULTS (I/II)

Overall Expected Result: The number of investigated and reported wildlife crime cases proceeding to trial has increased by at least 25% due to improved expertise as well as better interagency and cross-border cooperation of responsible authorities.

Expected Result 1: At least 50 European actors in the WLC prosecution chain, including prosecutors, enforcement agencies and NGOs representing 11 focal countries reaffirm commitment to strategic cooperation.

Expected Result 2: In order to establish a baseline and inform policy advocacy, intelligence on WLC from 11 countries has been gathered and analysed in participatory manner, delivering facts on the number and type of investigations and prosecutions, reasons for non-prosecution, and gaps in current practices. – Results until 2022 – **11 data bases with WLC cases with more than 4800 WLC cases (not public yet), the European report is under development**



EXPECTED RESULTS (II/II)

Expected Result 3: An effective Europe-wide internet-based information portal has been set up, facilitating the sharing of information, being visited annually by minimum 1000 representatives of investigation and prosecution agencies and other specialists on WLC, and whose maintenance is ensured for at least 5 years after project end. - <https://stopwildlifecrime.eu>

Expected Result 4: Out of 600 experts trained, 300 prosecutors and representatives of enforcement agencies in 11 countries have significantly increasing their level of knowledge and understanding of the impact of WLC on protected species populations, its links to other criminal activities, and ways of successfully fighting it. – **European workshop based on European report findings under preparation (end of June 2022)**

Expected Result 5: 10 Million citizens reached, and 25 exemplary cases of verdicts have been communicated to the general public in order to change the sense of impunity and low risk. – **media reach more than 179 000 000 people**

Expected Result 6: Effective project management, supported by robust monitoring and evaluation ensures delivery of objectives and sustainability of project outcomes.

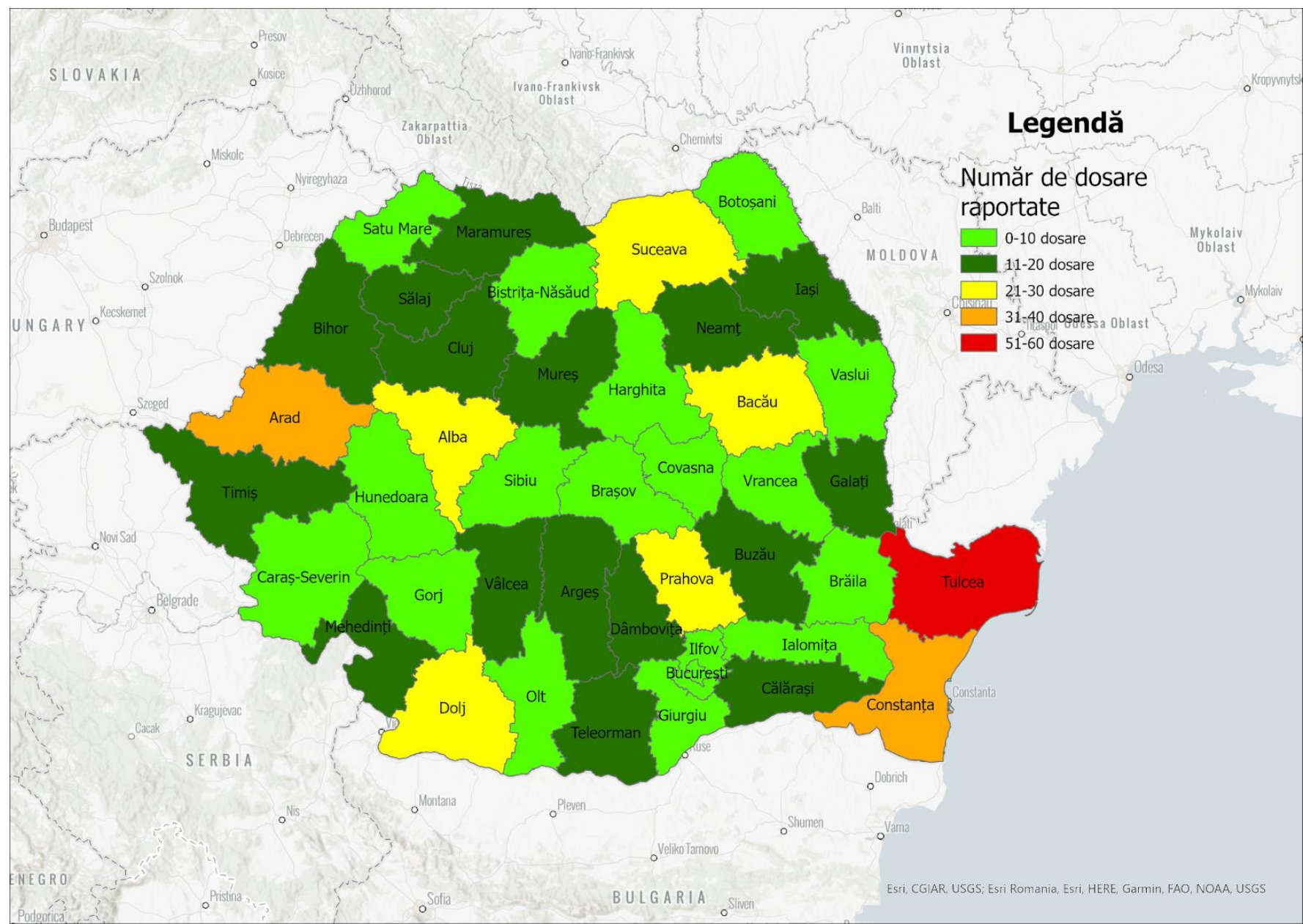


Distribution of the no. of cases taken to the Court/county

[2015-2020 data

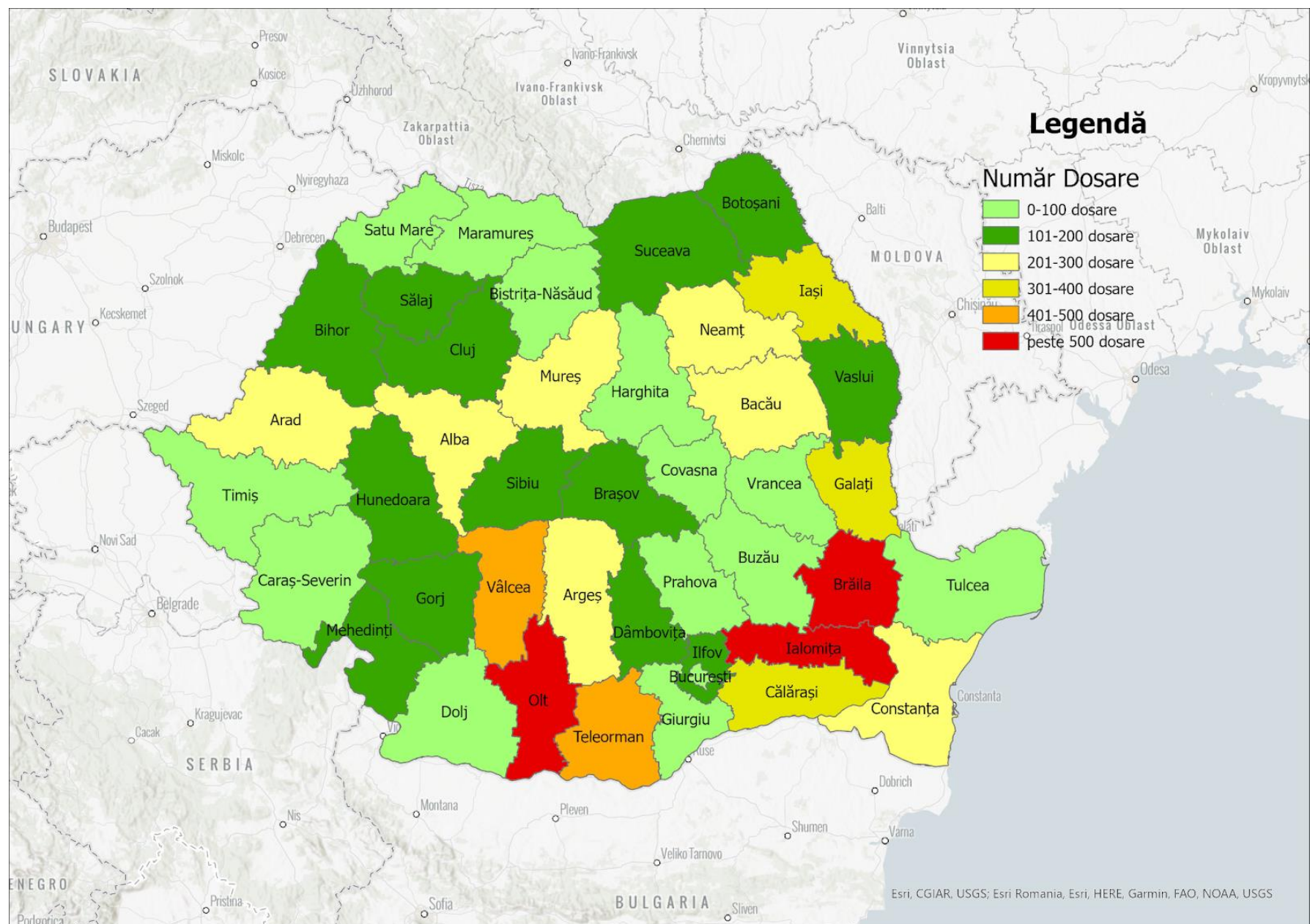
606 cases in total (3 for
bears, 1 for lynx)

from 300 + courts and
other institutions]





**Distribution of the no.
of cases that were not
taken to the
Court/county
(investigation closed)**





TRAFFIC
the wildlife trade monitoring network



LIFE19 GIE/BG/000846 SWIPE Project
Successful Wildlife Crime Prosecution in Europe

REPLICABILITY AND CONTINUATION

The consortium builds on the results of previous projects and designs interventions. As part of a global network, with **excellent coverage across the EU, FFI, WWF and TRAFFIC partners** can guarantee extension beyond target countries.

The project's **Expert Reference Panel** will further support replication through their existing networks, activities, and events.

At the end of the project a 25% increase in cases proceeding to trial in 11 focal countries compared to the baseline value of 2021 is expected. The increase can go up to 35% during the first three years after the project ended.

A self-sustaining loop with more cases will create more learning opportunities and continue to increase capacities and cooperation of enforcement officials and prosecutors even after the project ended.



FAUNA & FLORA
INTERNATIONAL

TRAFFIC
the wildlife trade monitoring network

Pravosudna
akademija



LIFE19 GIE/BG/000846 SWIPE Project
Successful Wildlife Crime Prosecution in Europe

Thank you!

