

# LECA - project overview

Interreg  
CENTRAL EUROPE

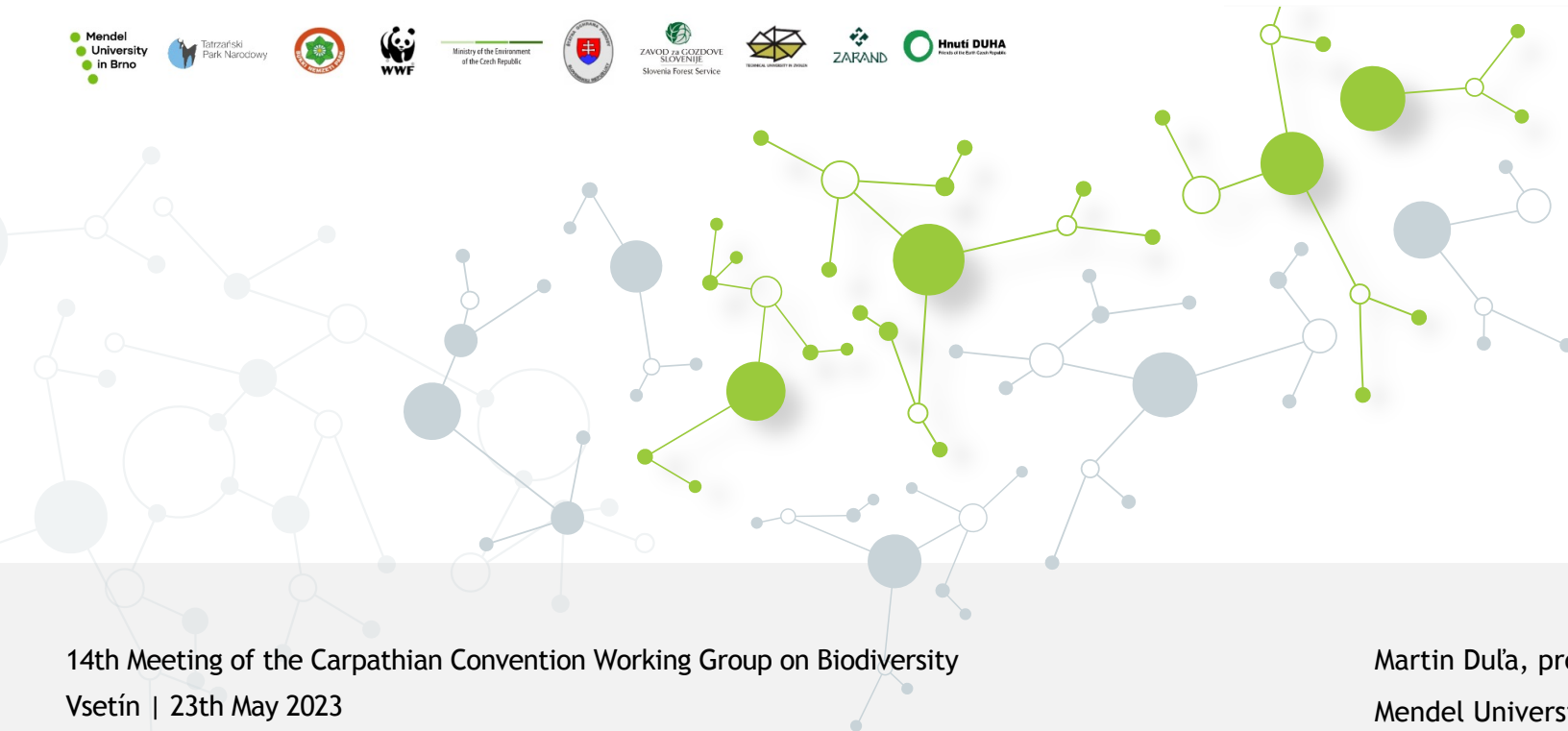


Co-funded by  
the European Union

Supporting the coexistence and conservation of  
Carpathian Large Carnivores

LECA

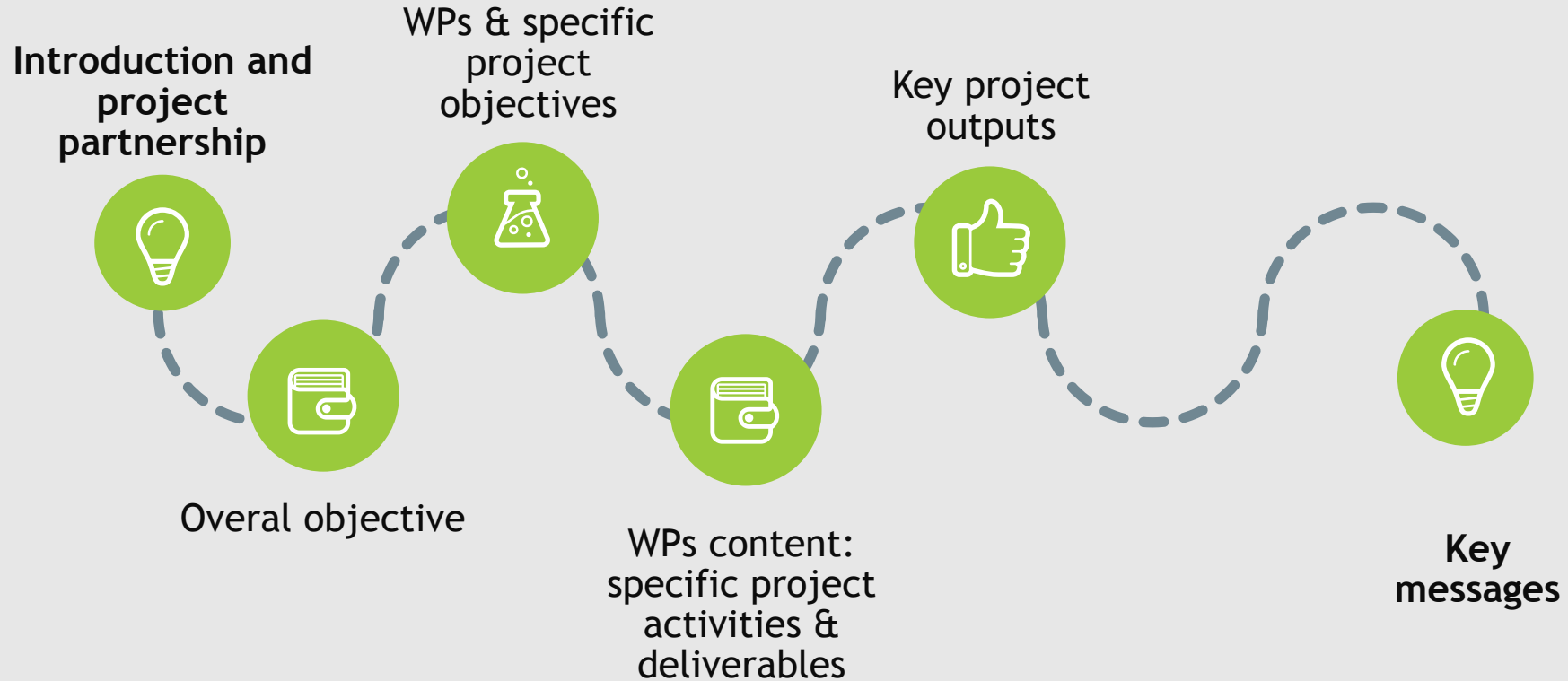
LECA - CE0100170



14th Meeting of the Carpathian Convention Working Group on Biodiversity  
Vsetín | 23th May 2023

Martin Duľa, project coordinator  
Mendel University in Brno

# CONTENT



# Introduction

---

Why project LECA?



# Project partnership

## Lead partner

- Mendel
- University
- in Brno

LECA

## Regular project partners



Ministry of the Environment  
of the Czech Republic



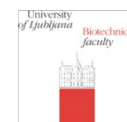
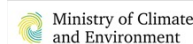
SK PL HU



ZAVOD za GOZDOVE  
SLOVENIJE  
Slovenia Forest Service



## Associated partners



## Pilot areas

1. Beskydy-Kysuce (CZ/SK)
2. Tatras (SK/PL)
3. East Carpathians (SK/PL/UA)
4. Slovak Karst - North HU Mts (SK/HU)

## Reference areas

5. Slovenia
6. Romania



# Project overall objective

- LECA supports SO2.4 objective of biodiversity conservation by building a comprehensive, sustainable system of monitoring large carnivores (wolves, bears, lynxes) and offering joint solutions to tackle poaching and resolve human-carnivore conflicts across the Carpathians
- Novel Thematic Guidances based on primary data collection in 4 cross-border areas will be the basis for validated solutions and strategies disseminated and scaled up for uptake at national, transnational and Carpathian level.



# WPs & specific objectives

## WP1 (MOE CZ)

Setting the scene for present and future of large carnivore conservation in the Carpathians



Delivering a transnationally validated and recognised set of Thematic Guidances in large carnivore conservation and human-carnivore coexistence in the Carpathians and scaling up towards the Alpine Region and the EU level

## WP2 (MENDELU)

Pilot Actions for large carnivore conservation in 4 pilot and 2 reference areas in the Carpathians



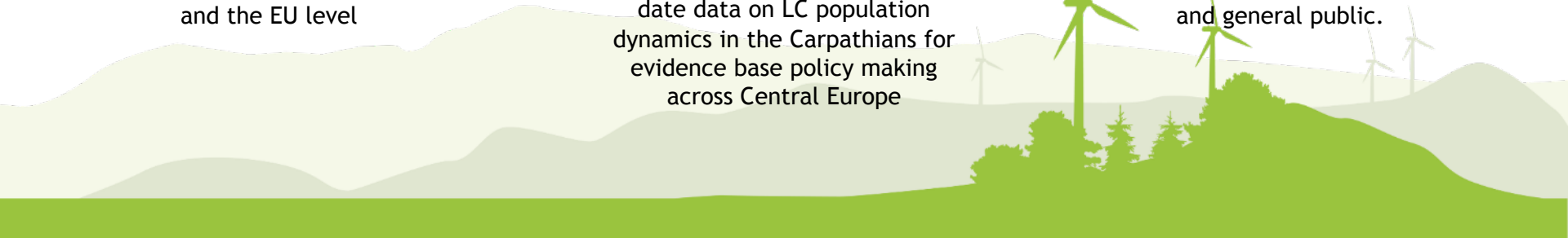
Field level validation of the three joint Thematic Guidances in cross-border pilot areas and provision of reliable and up-to-date data on LC population dynamics in the Carpathians for evidence base policy making across Central Europe

## WP3 (WWF HU)

Multi-stakeholder engagement and policy, education and public roll-out of project findings



Creating pilot-area specific, yet transnationally validated practice and policy-driven strategies for future maintenance of project methodologies, tools and practices and roll out results towards national policy and education, and general public.



# WPs: specific activities & deliverables

## WP1 (MOE CZ)

Setting the scene for present and future of large carnivore conservation in the Carpathians

- **Activity 1.2 (MOE CZ)**

*Exchange and pre-validation of knowledge (expert consultation) with and for the Carpathian Convention and relevant partners (from Period 1, 1 - 6 to Period 2, 7 - 12)*

- a) **D.1.2.1** Series of online consultations on A1.1 analyses with Carpathian Convention (CC) WG Biodiversity (MOE CZ) → 10/23-03/24
- b) **D.1.2.2** Series of online consultations on the LC analyses with the Alpine Convention (MOE CZ)

	Period 1	Period 2	Period 3	Period 4	Period 5	Period 6
<b>WP1 Setting the scene for present and future...</b>						
A1.1 Setting the scene in large carnivor...	<div style="display: flex; flex-direction: column; align-items: center;"> <div style="border: 1px solid black; width: 100px; height: 15px; background-color: #f9a825; margin-bottom: 2px;">D1.1.2</div> <div style="border: 1px solid black; width: 100px; height: 15px; background-color: #f9a825; margin-bottom: 2px;">D1.1.3</div> <div style="border: 1px solid black; width: 100px; height: 15px; background-color: #f9a825; margin-bottom: 2px;">D1.1.4</div> <div style="border: 1px solid black; width: 100px; height: 15px; background-color: #f9a825;">D1.1.1</div> </div>					
A1.2 Exchange and pre-validation of know...	<div style="display: flex; flex-direction: column; align-items: center;"> <div style="border: 1px solid black; width: 100px; height: 15px; background-color: #f9a825; margin-bottom: 2px;">D1.2.2</div> <div style="border: 1px solid black; width: 100px; height: 15px; background-color: #f9a825; margin-bottom: 2px;">D1.2.3</div> <div style="border: 1px solid black; width: 100px; height: 15px; background-color: #f9a825;">D1.2.1</div> </div>					
A1.3 Exchange and final validation of pl...	<div style="display: flex; flex-direction: column; align-items: center;"> <div style="border: 1px solid black; width: 100px; height: 15px; background-color: #f9a825; margin-bottom: 2px;">D1.3.1</div> <div style="border: 1px solid black; width: 100px; height: 15px; background-color: #f9a825; margin-bottom: 2px;">D1.3.2</div> <div style="border: 1px solid black; width: 100px; height: 15px; background-color: #f9a825;">D1.3.3</div> </div>					
A1.4 Transnational recommendations on im...	<div style="display: flex; flex-direction: column; align-items: center;"> <div style="border: 1px solid black; width: 100px; height: 15px; background-color: #f9a825; margin-bottom: 2px;">D1.4.3</div> <div style="border: 1px solid black; width: 100px; height: 15px; background-color: #f9a825; margin-bottom: 2px;">D1.4.1</div> <div style="border: 1px solid black; width: 100px; height: 15px; background-color: #f9a825;">D1.4.2</div> </div>					
RC0116_2,4	<div style="display: flex; flex-direction: column; align-items: center;"> <div style="border: 1px solid black; width: 100px; height: 15px; background-color: #f9a825; margin-bottom: 2px;">O1.1</div> <div style="border: 1px solid black; width: 100px; height: 15px; background-color: #f9a825; margin-bottom: 2px;">O1.2</div> <div style="border: 1px solid black; width: 100px; height: 15px; background-color: #f9a825;">O1.3</div> </div>					
RC083_2,4	<div style="display: flex; flex-direction: column; align-items: center;"> <div style="border: 1px solid black; width: 100px; height: 15px; background-color: #f9a825; margin-bottom: 2px;">O1.4</div> </div>					
RC087_2,4	<div style="display: flex; flex-direction: column; align-items: center;"> <div style="border: 1px solid black; width: 100px; height: 15px; background-color: #f9a825; margin-bottom: 2px;">O1.5</div> </div>					



# WPs: specific activities & deliverables

## WP1 (MOE CZ)

Setting the scene for present and future of large carnivore conservation in the Carpathians

- **Activity 1.3 (MOE CZ)**

*Exchange and final validation of pilot results (from Period 5, 25 - 30 to Period 6, 31 - 36)*

- a) **D.1.3.1 Concluding consultations held on the validated LC guidances with the Carpathian Convention (CC) (MOE CZ) → 10/25-03/26**
- b) **D.1.3.2 Conclude consultations on the validated LC guidances with Alpine Convention (AC) (MOE CZ)**

	Period 1	Period 2	Period 3	Period 4	Period 5	Period 6
<b>WP1 Setting the scene for present and future...</b>						
A1.1 Setting the scene in large carnivor...		D1.1.2 D1.1.3 D1.1.4 D1.1.1				
A1.2 Exchange and pre-validation of know...			D1.2.2 D1.2.3 D1.2.1			
A1.3 Exchange and final validation of pl...						D1.3.1 D1.3.2 D1.3.3
A1.4 Transnational recommendations or im...				D1.4.3		D1.4.1 D1.4.2
RC0116_2.4						O1.1 O1.2 O1.3
RC083_2.4						O1.4
RC087_2.4						O1.5

# WPs: specific activities & deliverables

## WP1 (MOE CZ)

Setting the scene for present and future of large carnivore conservation in the Carpathians

### • Activity 1.4 (MOE CZ)

*Transnational recommendations on implementation and harmonization for international / EU bodies (from Period 4, 19 - 24 to Period 6, 31 - 36) → 10/25-03/26*

- a) D.1.4.1 Guidance to the implementation of the Intl Action Plan on LCs, incl. through updating Report on LCs (MOE CZ)
- b) D.1.4.2 European recommendations and transnational harmonisation of LCs based on validated Final Guidances (MOE CZ)
- c) D.1.4.3 Dissemination (and webinar) event on LCs organised at Carpathian and Alpine Convention level (MoE CZ & SFS SI)

	Period 1	Period 2	Period 3	Period 4	Period 5	Period 6
<b>WP1 Setting the scene for present and future...</b>						
A1.1 Setting the scene in large carnivor...	D1.1.2 D1.1.3 D1.1.4 D1.1.1					
A1.2 Exchange and pre-validation of know...		D1.2.2 D1.2.3 D1.2.1				
A1.3 Exchange and final validation of pl...						D1.3.1 D1.3.2 D1.3.3
A1.4 Transnational recommendations on im...				D1.4.3		D1.4.1 D1.4.2
RCO116_2.4						O1.1 O1.2 O1.3
RCO83_2.4						O1.4
RCO87_2.4						O1.5

# WPs: specific activities & deliverables

## WP3 (WWF HU)

Multi-stakeholder engagement and policy, education and public roll-out of project findings

- Activity 3.2 (MENDELU, pilot leaders coordinating locally)

*Elaboration of strategies including peer review and participation (from Period 5, 25 - 30 to Period 6, 31 - 36)*

- a) D.3.2.3 Meeting report / declaration of intent (MoE CZ & all PPs)

	Period 1	Period 2	Period 3	Period 4	Period 5	Period 6
<b>WP3 Multi-stakeholder engagement and policy,...</b>						
A3.1 Establishment of stakeholder platform...	D3.1.1				D3.1.2	
A3.2 Elaboration of strategies including...					D3.2.2	D3.2.3
					D3.2.1	
A3.3 Channelling project knowledge into...						D3.3.2
						D3.3.1
A3.4 Bringing project results to national...					D3.4.3	
					D3.4.2	
					D3.4.1	
A3.5 Widening the reachout - awareness...	D3.5.1				D3.5.3	
					D3.5.2	
RCO116_2.4	O3.2					
RCO83_2.4					O3.1	



# WPs: specific activities & deliverables

## WP3 (WWF HU)

Multi-stakeholder engagement and policy, education and public roll-out of project findings

- **Activity 3.4 (MOE CZ)**

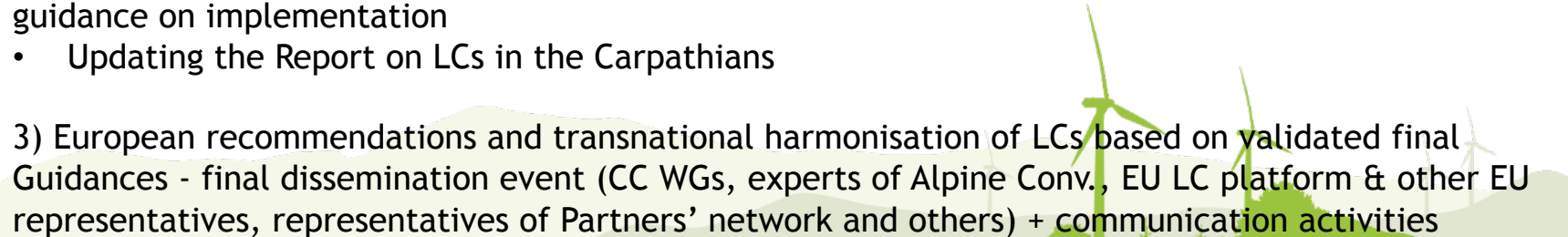
**Bringing project results to national policy levels  
(from Period 5, 25 - 30 to Period 6, 31 - 36) →  
04/25-03/26**

- a) **D.3.4.1** Series of national roundtable discussions to engage policymakers into formulation of recommendations (**MoE CZ and pilot leaders**)
- b) **D.3.4.2** National recommendations on LC conservation and management (**MoE CZ**)
- c) **D.3.4.3** Supporting the uptake of national recommendations (**MoE CZ**)

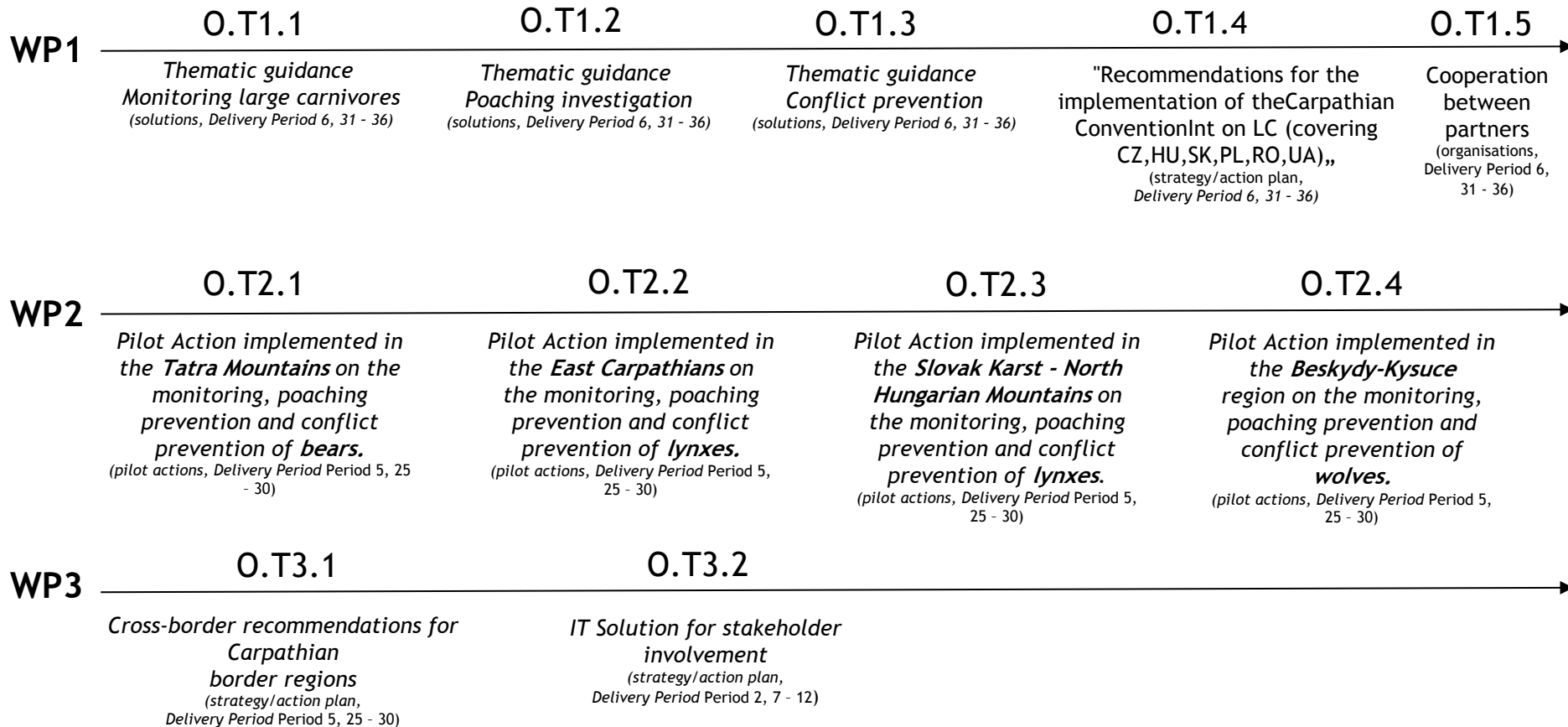
	Period 1	Period 2	Period 3	Period 4	Period 5	Period 6
<b>WP3 Multi-stakeholder engagement and policy,...</b>						
A3.1 Establishment of stakeholder platfo...	D3.1.1					D3.1.2
A3.2 Elaboration of strategies including...					D3.2.2	D3.2.3
					D3.2.1	
A3.3 Channelling project knowledge into...						D3.3.2
						D3.3.1
A3.4 Bringing project results to nationa...					D3.4.3	
					D3.4.2	
					D3.4.1	
A3.5 Widening the reachout - awareness a...	D3.5.1					D3.5.3
						D3.5.2
RCO116_2,4	O3.2					
RCO83_2,4					O3.1	



# Engagement of the WG Biodiversity

- 1) Three Thematic Guidances on large carnivore conservation in the Carpathians (monitoring, poaching investigation, and human-carnivore conflict prevention)
    - Online workshop for the consultation of draft Thematic Guidances on large carnivore monitoring, poaching investigation, and human-carnivore conflict prevention, final validation of pilot results
    - Discussion at WG level prior to CCIC/COP (seeking recognition by policy makers and upscale at a transnational level)
  
  - 2) Carpathian Action Plan on Large Carnivores: most activities due in 2026 - need for evaluation and revision - LECA will feed into this work by providing recommendations on relevant measures / guidance on implementation
    - Updating the Report on LCs in the Carpathians
  
  - 3) European recommendations and transnational harmonisation of LCs based on validated final Guidances - final dissemination event (CC WGs, experts of Alpine Conv., EU LC platform & other EU representatives, representatives of Partners' network and others) + communication activities
- 

# Overview of key project outputs



# Key messages

Long term coexistence  
between people and large  
carnivores in Carpathians can  
not be achieved without  
transnational cooperation!

&

We need evidence-based  
conservation and management  
of large carnivores in  
Carpathians!



THANK YOU FOR  
YOUR  
ATTENTION!

[martin.dula@mendelu.cz](mailto:martin.dula@mendelu.cz)

<https://www.interreg-central.eu/projects/leca/>

