

# Relevant projects for Biodiversity/ Large Carnivores' Conservation in the Carpathians: **TRANSGREEN, ConnectGREEN, EUROLARGE CARNIVORES**

9th Meeting of the Carpathian Convention  
Working Group on Conservation and Sustainable  
Use of Biological and Landscape Diversity  
30 May 2019, Ostrava, Czech Republic

Cristian-Remus Papp,  
Wildlife and Landscape National Manager,  
WWF RO



Danube Transnational Programme

TRANSGREEN

# **TRANSGREEN. Integrated Transport and Green Infrastructure Planning in the Danube-Carpathian Region for the Benefit of People and Nature**

January 2017 – June 2019

Project co-funded by the European Regional Development Fund (ERDF).

[www.interreg-danube.eu/transgreen](http://www.interreg-danube.eu/transgreen)



# The Carpathians



©Hildegard Meyer

Project co-funded by the European Regional Development Fund (ERDF).

[www.interreg-danube.eu/transgreen](http://www.interreg-danube.eu/transgreen)





© Ivo Dostal

Project co-funded by the European Regional Development Fund (ERDF).

[www.interreg-danube.eu/transgreen](http://www.interreg-danube.eu/transgreen)



# Series of bear accidents in Romania



Project co-funded by the European Regional Development Fund (ERDF).

[www.interreg-danube.eu/transgreen](http://www.interreg-danube.eu/transgreen)

# Project consortium

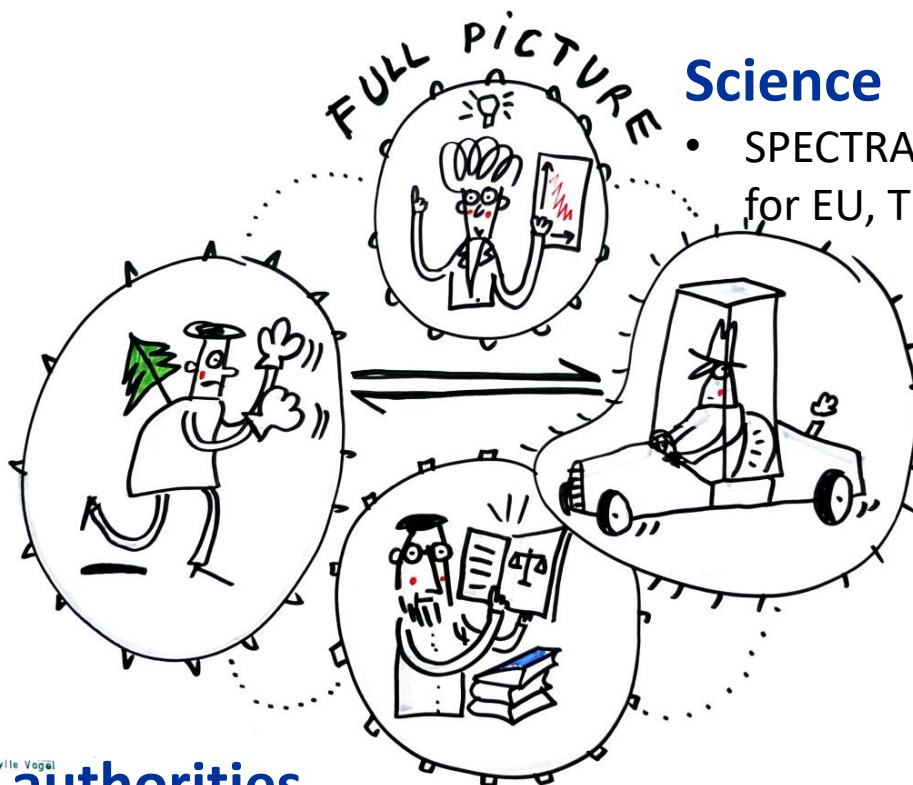
## NGOs

- Friends of the Earth – CZ
- CEEweb – HU
- Milvus – RO
- WWF – AT, RO

## Public authorities

- Nature Conservation Agency - CZ
- State Nature Conservancy - SK

**9 Associated Strategic Partners** from  
AT, CZ, HU, PL, RO, SI, UA





# Specific objectives



1. **Cooperation** among relevant partners from transport, spatial planning and environmental sector is improved.
2. **Scientific knowledge** base for sound decision-making is created.
3. **Conflicts** between transport planning and Green Infrastructure objectives are **minimised**.

# Cooperation established

- Across the Carpathians and beyond (ca. 460 institutions)



Project co-funded by the European Regional Development Fund (ERDF).

[www.interreg-danube.eu/transgreen](http://www.interreg-danube.eu/transgreen)





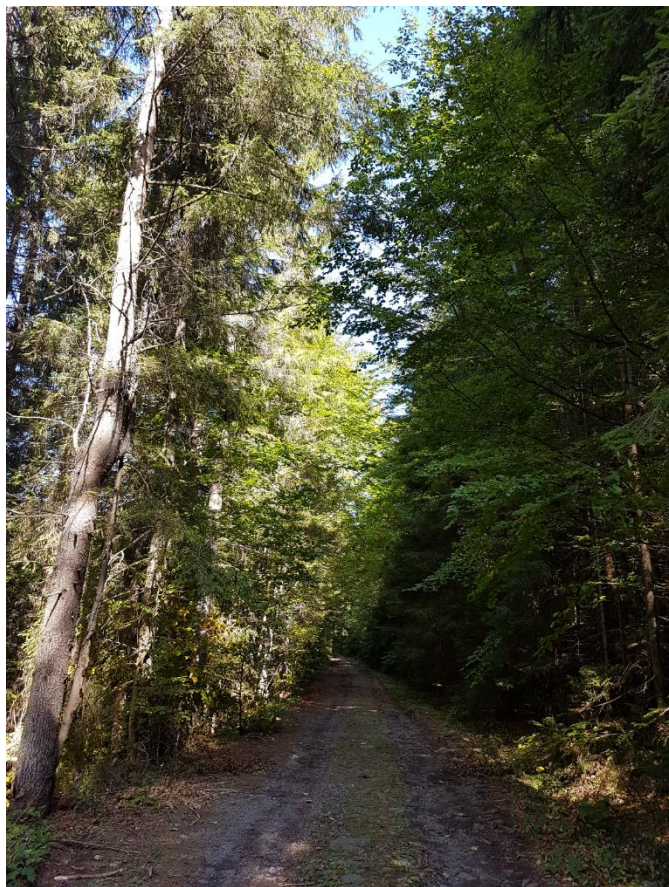
Mid-term event in Bratislava  
4-5 September 2018



Project co-funded by the European Regional Development

[www.interreg-danube.eu](http://www.interreg-danube.eu)





## “Wildlife and Transportation in the Carpathian Countries”

Guidelines on how to minimize impact of transport infrastructure development on nature in the Carpathian countries

© Hildegard Meyer

Project co-funded by the European Regional Development Fund (ERDF).

[www.interreg-danube.eu/transgreen](http://www.interreg-danube.eu/transgreen)



**AVOIDANCE**



**MITIGATION**



**COMPENSATION**

**Each case is a unique case!**

Project co-funded by the European Regional Development Fund (ERDF).

[www.interreg-danube.eu/transgreen](http://www.interreg-danube.eu/transgreen)

# Guidelines – Table of content

## Introductory part:

- Basic terms
- Effects of transport infrastructure on nature
- Specifics of the Carpathians
- Legislation & planning procedures
- Animals and habitats

## Specific chapters:

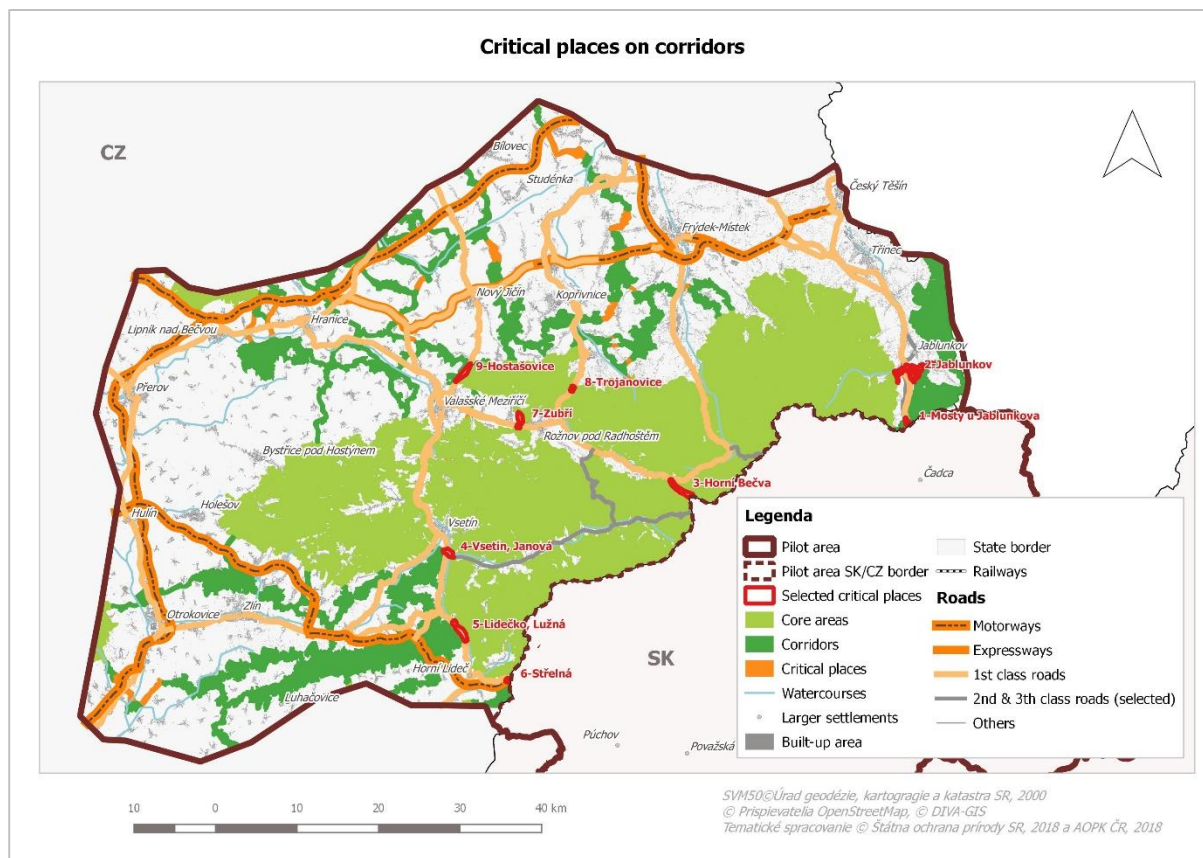
- How to integrate transport routes into surrounding landscape - design
- Fauna passages – technical solutions
- Compensation measures
- Monitoring



# Pilot areas



## Beskydy – Kysuce (CZ-SK)



Project co-funded by the European Regional Development Fund (ERDF).



# One example – Beskydy pilot area

## Focus on monitoring

Research undertaken

- Monitoring of traffic intensity patterns
- Monitoring of existing fauna passages along roads/rails
  - 415 objects were examined

Content

- Critical areas identified
- Recommendations for improvements towards permeability of roads/rails

Project co-funded by the European Regional Development Fund (ERDF).

[www.interreg-danube.eu/transgreen](http://www.interreg-danube.eu/transgreen)





# EIA training event – SUCCESS!



Based on the

**Carpathian Convention**

**Protocol on Sustainable Transportation**

4 Objectives – further elaboration in a cross-sectoral setting!

TRANSGREEN and ConnectGREEN will support its implementation

Project co-funded by the European Regional Development Fund (ERDF).

[www.interreg-danube.eu/transgreen](http://www.interreg-danube.eu/transgreen)



# You are invited to participate!

**Ongoing national cross-sectoral  
meetings until mid June**

**Final conference in Bucharest, 25 Jun 19  
under the EU and EUSDR Presidency**

# Your support is welcome

- Support implementing the Catalogue of measures
- Support the further fine tuning of the Strategic Action Plan together with the WG on Transport
- Adopt of the Carpathian Convention Strategic Action Plan at COP6 in 2020
- Implement Policy recommendations



# About connectivity

The world is evolving,



# We are in the same... car!



Sibylle Vogel



A landscape photograph showing a range of mountains in silhouette against a sky with soft, golden light from a low sun. The clouds are scattered and catch the light, creating a warm, atmospheric scene. The mountains in the foreground are dark and jagged, while those in the distance are lighter and more hazy.

**ConnectGREEN.** Restoring and  
managing ecological corridors in  
mountains as the green infrastructure  
in the Danube basin

Project co-funded by European Union Funds (ERDF, IPA)

[www.interreg-danube.eu/connectgreen](http://www.interreg-danube.eu/connectgreen)











Project co-funded by the European Regional Development Fund (ERDF).

Preserve Nature & Wildlife for me too!!! [www.interconnect4me.eu/transgreen](http://www.interconnect4me.eu/transgreen)



## ConnectGREEN

Aims at maintaining and improving the ecological connectivity between natural habitats in the Carpathian ecoregion.



# Project in numbers

- Duration: June 2018 – May 2021
- 11 Partners from 6 EU countries (ERDF)
- 2 Partners from Serbia (IPA)
- 10 Associated Strategic Partners (ASP)
- Coordinated by: WWF Romania
- Value: ~ 2.46 million euros



# Project Partners

- **Romania:** WWF DCP Romania (Lead Partner); National Institute for Research and Development in Constructions, Urban Planning and Sustainable Spatial Development; Piatra Craiului National Park Administration;
- **Austria:** WWF International Danube-Carpathian Programme;
- **Czech Republic:** Nature Conservation Agency; Silva Tarouca Research Institute for Landscape and Ornamental Gardening;
- **Hungary:** CEEweb for Biodiversity; Szent Istvan University;
- **Slovakia:** The State Nature Conservancy of the Slovak Republic; Slovak University of Technology in Bratislava - SPECTRA Centre of Excellence of EU;
- **Serbia:** Institute of Architecture and Urban & Spatial Planning of Serbia; National Park Djerdap.

- **Czech Republic:** Ministry of the Environment; Ministry of Regional Development;
- **Hungary:** Bükk National Park Directorate;
- **Romania:** Ministry of Environment;
- **Serbia:** Ministry of Agriculture and Environmental Protection;
- **Slovakia:** Ministry of Transport and Construction;
- **Ukraine:** Ministry of Ecology and Natural Resource;
- **Austria:** Danubeparks - Danube River Network of Protected Areas;
- **France:** Alpine Network of Protected Areas – ALPARC;
- **Montenegro:** Parks Dinarides – Network of protected areas of Dinarides.



# Why ConnectGREEN?

Danube-Carpathian region is one of the Europe's last remaining strongholds for the large carnivore species:  
*gray wolf,*  
*Eurasian lynx* and  
*brown bear*



Project co-funded by the European Regional Development Fund (ERDF)

Project co-funded by European Union Funds (ERDF, IPA)

[www.interreg-danube.eu/connectgreen](http://www.interreg-danube.eu/connectgreen)

# Why ConnectGREEN?

The economic development in the area can lead to:



- barriers for wild species movements

→ landscape and habitat fragmentation

- change of land use



## Various impacts on ecological corridors, affecting:



- Biodiversity
- Wildlife movement/ dispersal routes
- Stability and resilience of ecosystems
- Ecosystems services
- Regional prosperity

Project co-funded by the European Regional Development Fund (ERDF).

Project co-funded by European Union Funds (ERDF, IPA)

[www.interreg-danube.eu/connectgreen](http://www.interreg-danube.eu/connectgreen)

## The integrated planning for transport and other infrastructure works prioritized by public policies and international regulations ...

- EU Strategy for the Danube Region
- EU 7th Environmental Action Plan
- EU 2020 Biodiversity Strategy
- EU Strategy on Green Infrastructure
- TEN-T – Trans-European Network of Transport
- Carpathian Convention (and its relevant Protocols).

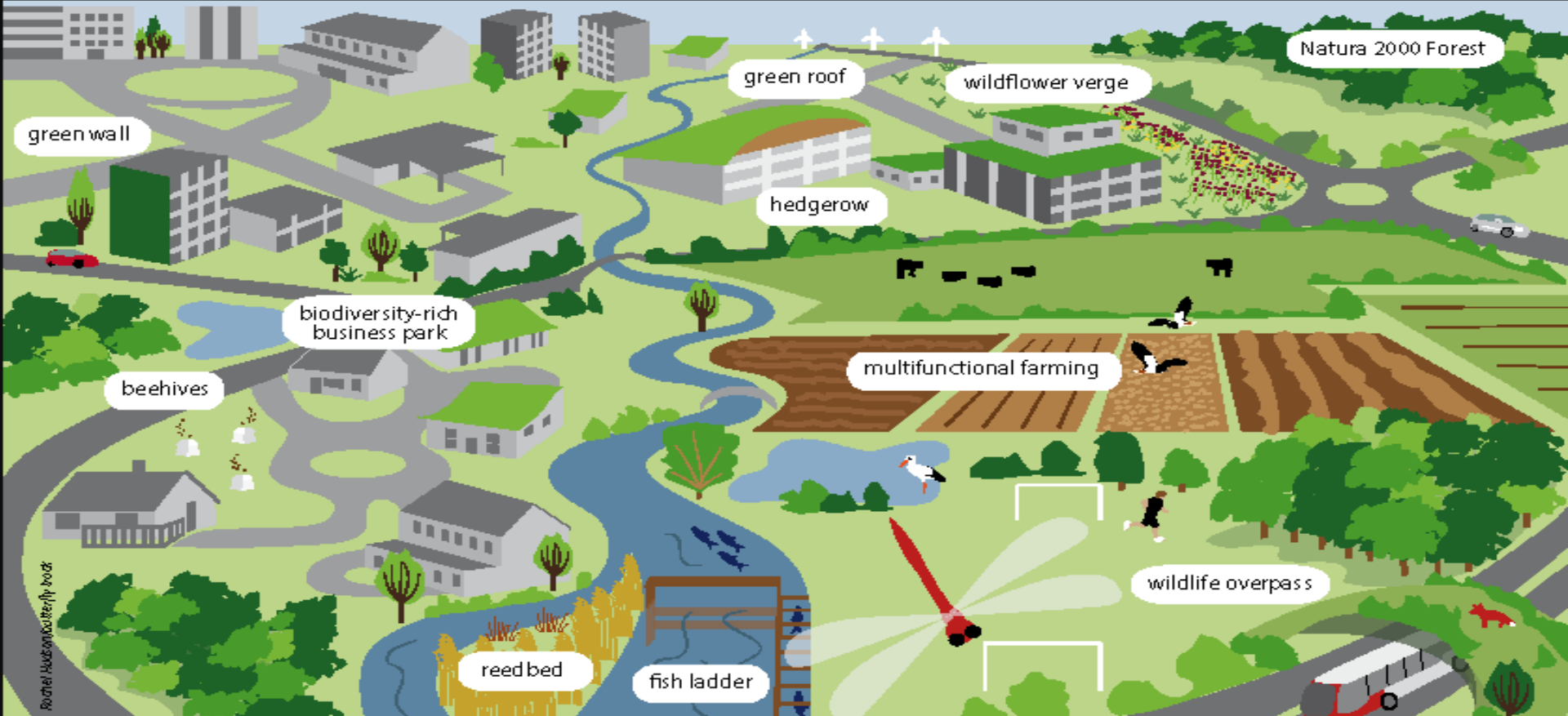
**... demands a balanced infrastructure development taking into account the nature conservation for generating durable solutions**

Project co-funded by the European Regional Development Fund (ERDF).

Project co-funded by European Union Funds (ERDF, IPA)

[www.interreg-danube.eu/connectgreen](http://www.interreg-danube.eu/connectgreen)





Rachel Hudson-Koerberly, 2018

## Potential components of a Green Infrastructure



- Core areas of high biodiversity value which act as hubs for GI, such as protected areas like Natura 2000 sites



- Core areas outside protected areas containing large healthy functioning ecosystems



- Restored habitats that help reconnect or enhance existing natural areas, such as a restored reedbed or wild flower meadow



- Natural features acting as wildlife corridors or stepping stones, like small watercourses, ponds, hedgerows, woodland strips



- Artificial features that enhance ecosystem services or assist wildlife movement such as eco-ducts or eco-bridges, fish ladders or green roofs

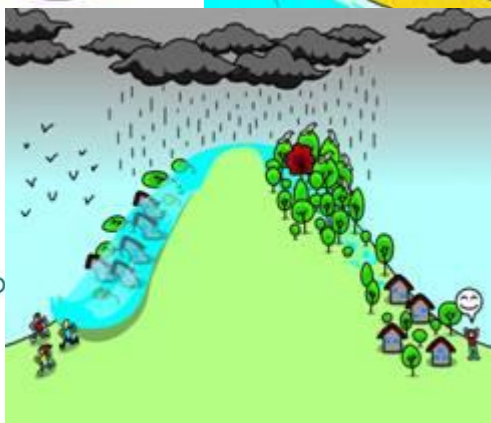
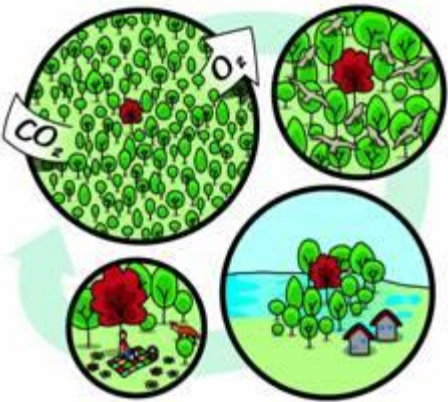


- Buffer zones that are managed sustainably and help improve the general ecological quality and permeability of the landscape to biodiversity, e.g. wildlife-friendly farming



- Multi-functional zones where compatible land uses can join forces to create land management combinations that support multiple land uses in the same spatial area, e.g. food production and recreation





Project co

Development Fund (ERDF).

by European Union Fund

interreg-danube.eu/connectgr



# Main Objective

Maintain and improve the ecological connectivity between natural habitats, especially Natura 2000 and other protected area categories of transnational relevance in the Carpathian ecoregion through...

# Specific Objectives

1. Eco-corridors and connectivity gaps identified in the Carpathians
2. Capacity for identifying and managing eco-corridors improved
3. Identify and implement strategic directions and instruments/practices in order to promote the value of ecological connectivity, in particular of large carnivore corridors, among planners and decision makers



# Pilot Areas



**Pilot areas:**

1. Piatra Craiului National Park / Bucegi Nature Park (Romania)
2. Apuseni mountains / Southwest Carpathians (Romania) / National Park Djerdap (Serbia)
3. Western Carpathians (Czech Republic - Slovakia)
4. Bükk National Park (Hungary) / Cerová vrchovina Protected Landscape Area (Slovakia)

Project co-funded by the European Regional Development Fund (ERDF).

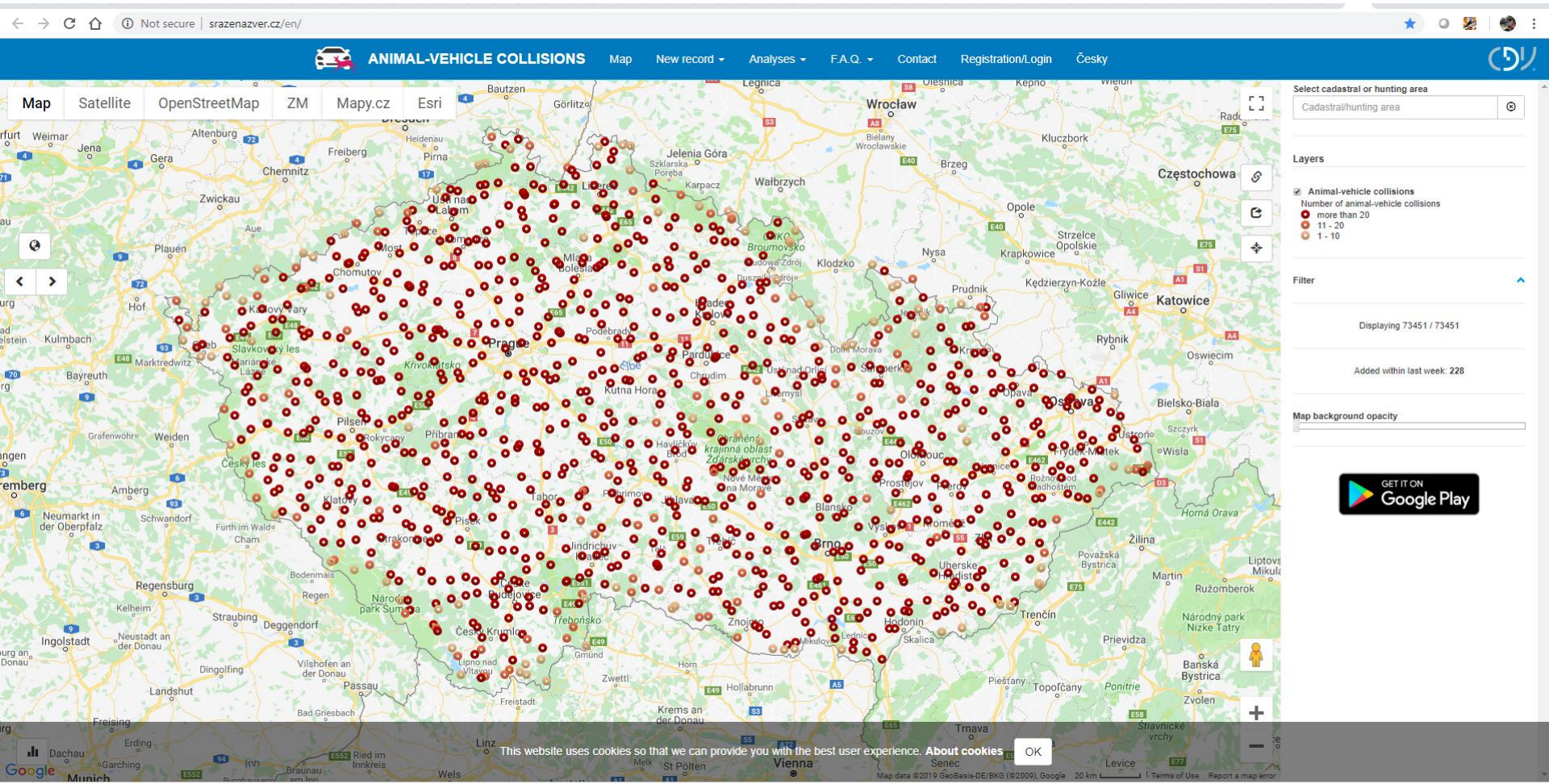
Project co-funded by European Union Funds (ERDF, IPA)

[www.interreg-danube.eu/connectgreen](http://www.interreg-danube.eu/connectgreen)

- **Methodology** for identifying ecological corridors
- **State of the Art Report** on the existing planning systems and their application for ecological corridor identification and management
- **GAP analysis report** on the identification of the needs for improving the planning processes and tools
- **Set of recommendations** developed together with spatial planners to avoid/ minimise fragmentation of ecological corridors and Natura 2000 sites



- Ecological connectivity related **database** under the CCIBIS
- Database with all relevant spatial information in each **pilot site**
- **Maps** with the distribution of target species, core areas, ecological corridors and critical barrier sites in each pilot areas
- **Strategy** on the identification, preservation and management of eco-corridors



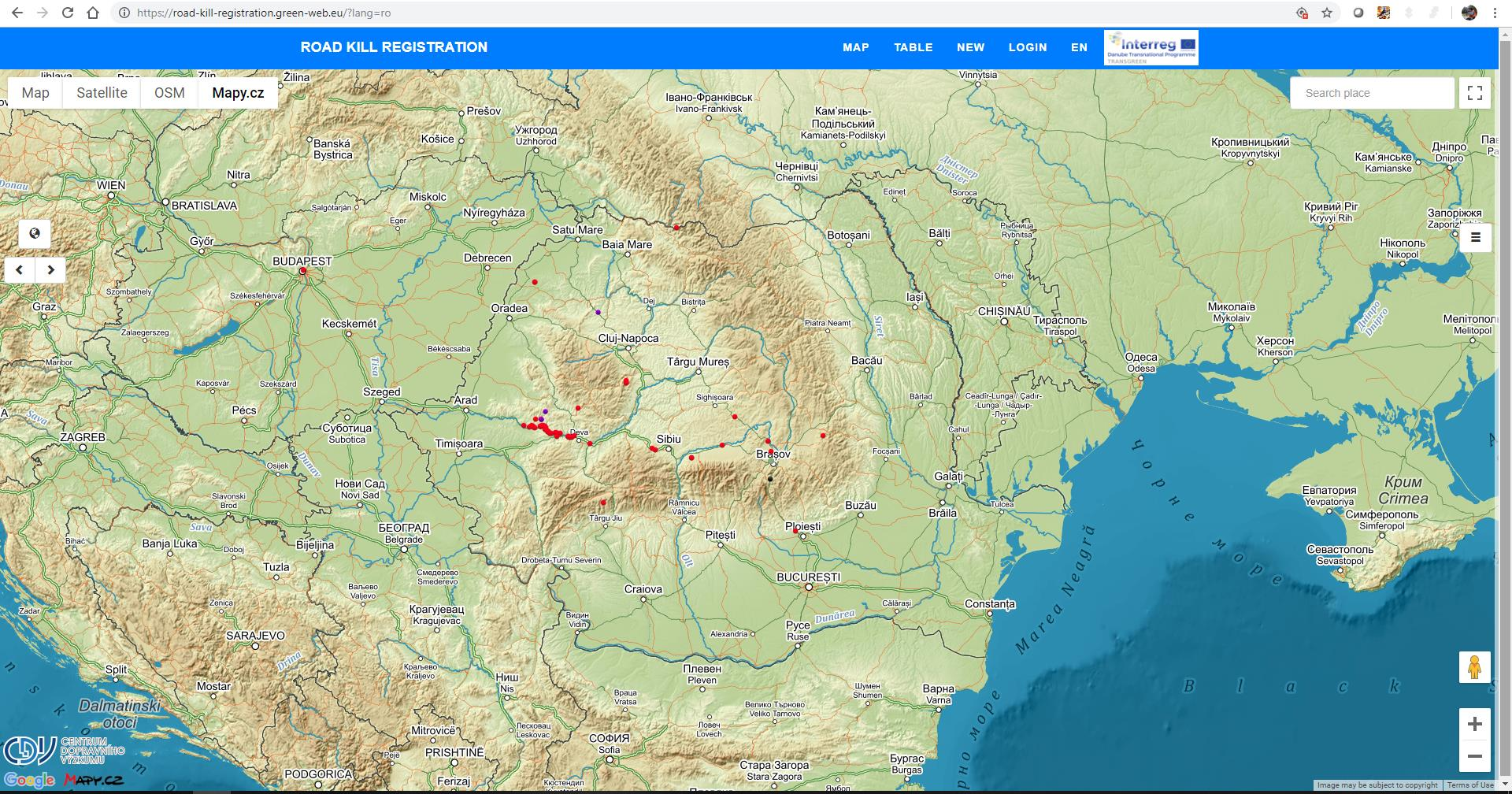
## Road-kill app tool, CDV, CZ

Project co-funded by the European Regional Development Fund (ERDF).

Project co-funded by the European Union Funds (ERDF, IPA)

[www.interreg-danube.eu/connectgreen](http://www.interreg-danube.eu/connectgreen)





## Road-kill app tool, RO

Project co-funded by the European Regional Development Fund (ERDF).

Project co-funded by the European Union Funds (ERDF, IPA)

[www.interreg-danube.eu/connectgreen](http://www.interreg-danube.eu/connectgreen)



# Target Groups

- Local Public Authorities
- National Public Authorities
- Sectoral Agencies
- Infrastructure and (public) Service Providers
- Interest Groups including NGOs



Fund (ERDF).

Project co-funded by European Union Funds (ERDF, IPA)

[www.interreg-danube.eu/connectgreen](http://www.interreg-danube.eu/connectgreen)



# Synergies

- TransGreen  
<https://www.youtube.com/watch?v=AqIzdxYIX3g&t=22s>
- BioGOV
- HARMON
- ...

Project co-funded by the European Regional Development Fund (ERDF).

Project co-funded by European Union Funds (ERDF, IPA)

[www.interreg-danube.eu/connectgreen](http://www.interreg-danube.eu/connectgreen)

Together possible!



Project co-funded by European Union Funds (ERDF, IPA)  
[www.interreg-danube.eu/transgreen](http://www.interreg-danube.eu/transgreen)  
[www.interreg-danube.eu/connectgreen](http://www.interreg-danube.eu/connectgreen)





Improving human coexistence with large carnivores in Europe through communication and transboundary cooperation

# Life EuroLargeCarnivores



Life EuroLargeCarnivores





Project ID: LIFE16 GIE/DE/000661

Acronym: LIFE EUROLARGE CARNIVORES

Coordinator: WWF Germany

Period: 4.5 years; start date 01.09.2017 – end date 28.02.2022

Total budget: 6.124.668 Euro (EU contribution: 3.657.943 Euro)



Life EuroLargeCarnivores





## Partners (16)



- WWF Germany (coordinator)
- Elmauer Institute
- Eliante
- FVA
- ANP
- WWF Austria
- WWF Adria
- WWF Switzerland
- WWF DCP (Slovakia+Ukraine)
- WWF Spain
- WWF Finland
- WWF France
- WWF Hungary
- WWF Norway
- WWF Poland
- WWF Romania



# Partner countries

**Fennoscandia:** Norway, Finland

**Central Europe:** Germany, Poland

**Carpathians:** Romania, Ukraine, Slovakia, Hungary

**Alpine:** Austria, Italy, Switzerland, Slovenia,  
Croatia, France

**Iberia:** Spain, Portugal

Budget: 6 Million Euros

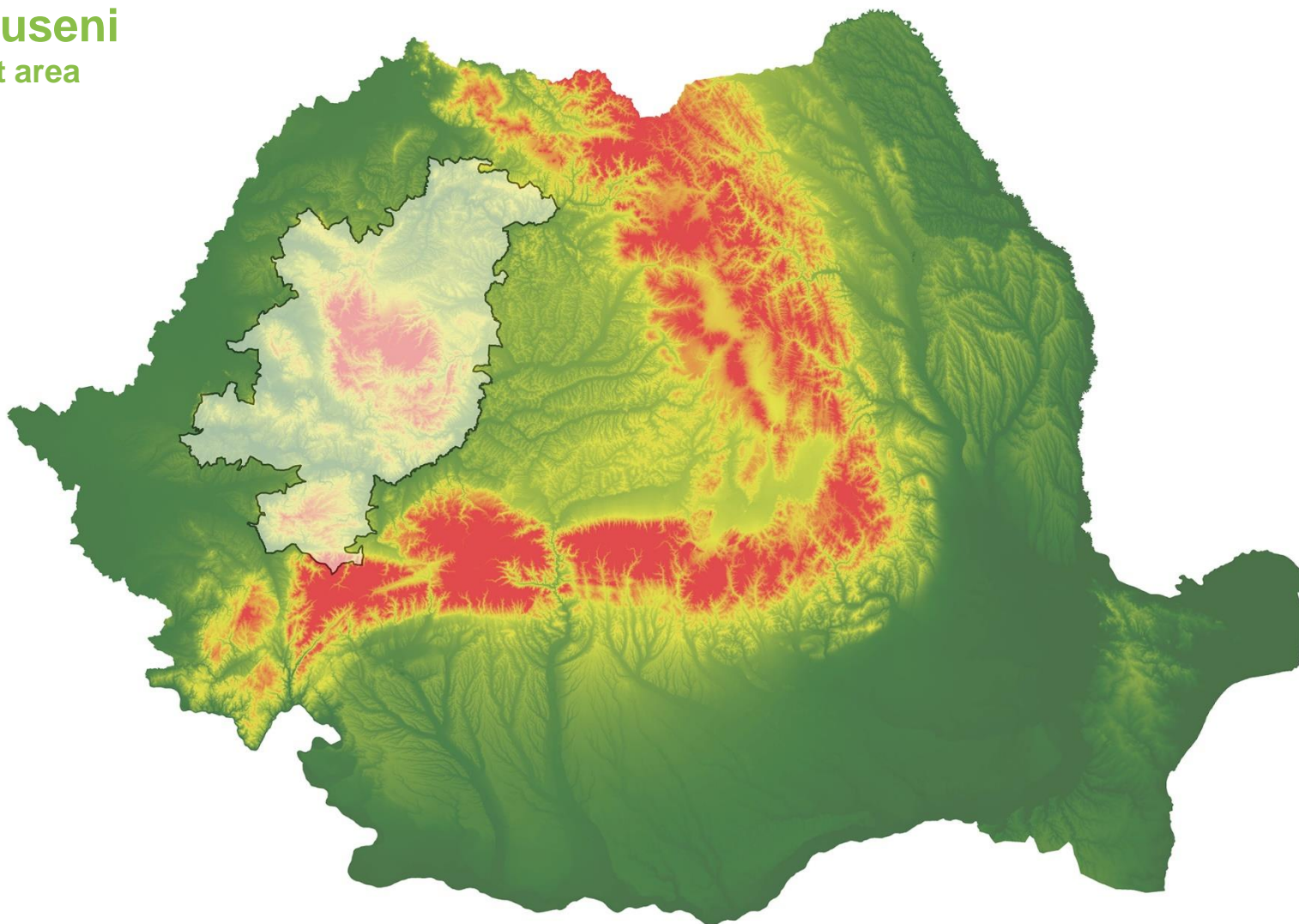
Period: 2017 – 2022

[www.eurolargecarnivores.eu](http://www.eurolargecarnivores.eu)





# Apuseni pilot area



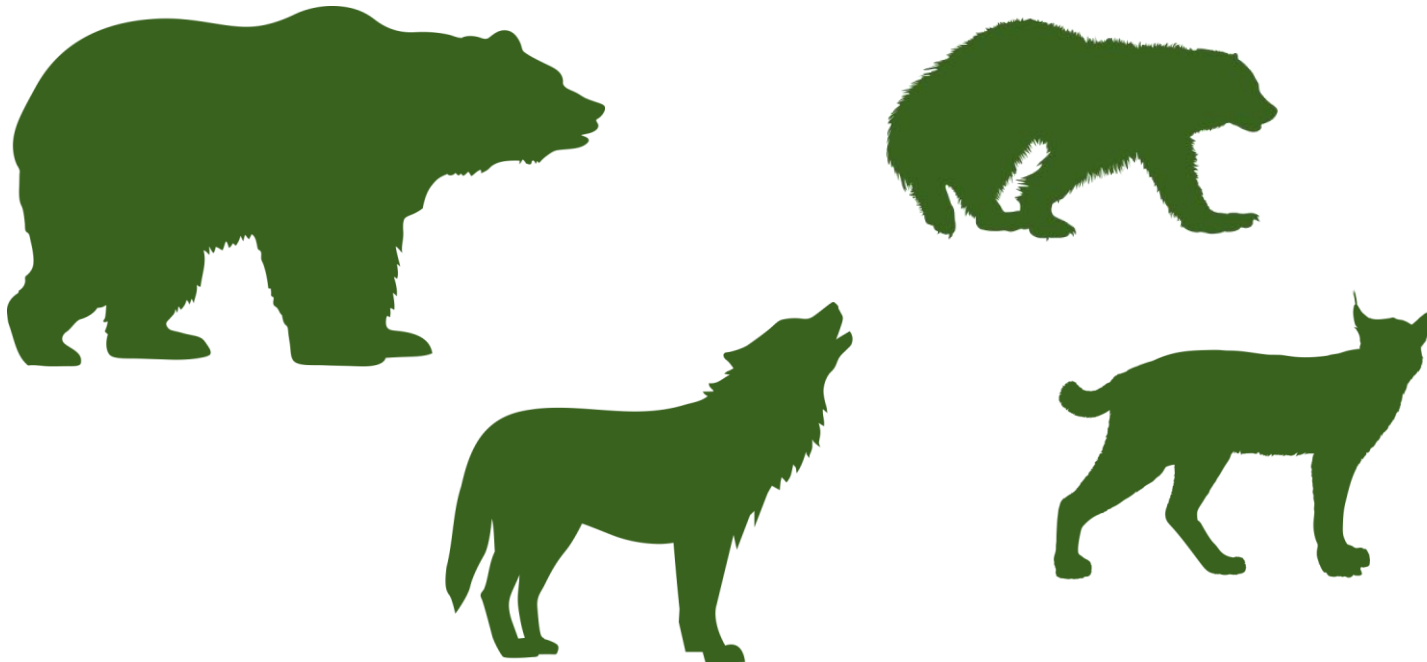
Life EuroLargeCarnivores



## Target species



**EUROLARGECARNIVORES** proposes a stakeholder oriented information and learning approach to ensure effective implementation of population based conservation strategies for the large carnivores (LC)





## The aim



**EUROLARGECARNIVORES** aims at improving communication between stakeholders in a cross-population and cross-border approach, in order to enhance population level management skills



## Project objectives (I)



- Boost awareness among local and national authorities and introduce communication tools that are customized to the geographical and cultural situation
- Inform and actively engage key-actors in a consensus-driven approach on their needs and responsibilities
- Develop cross-border, interdisciplinary pathways to engage formerly passive actors and bring new perspectives and knowledge to LC management
- Contribute to an EU-wide common understanding of stakeholder-oriented population based LC conservation strategies
- Contribute to the implementation of the DG Environment's policy paper "Key actions for large carnivore populations in Europe"





## Project objectives (II)



- Give added value to existing Large Carnivore (LIFE and other programmes) projects by promoting their results and sharing best-practices
- Provide local stakeholders such as farmers with direct engagement opportunities and custom-fit learning experiences through a trusted peer to peer approach



Proposed activities:

- data collection – occurrences, species distribution (bear, wolf) (wolf howling, snow tracking, camera traps, video collars on bears, interviews, etc.)
- data collection – conflicts/attacks/damages produced by wolf and bear
- data collection – occurrences/use of sheepfolds
- identification of key stakeholders, meetings, collaboration on reducing the human-large carnivore conflicts/improving human coexistence with large carnivores/fighting against poaching
- Implementing of livestock damage prevention measures (guarding dogs, electric fences)
- promoting co-existence and importance of large carnivores
- promoting the nature parc, as wildlife destination

## A. Preparatory actions



- 1) Review projects and successful instruments
- 2) Stakeholder Analysis
- 3) Collect data on economic, social and ecological impacts of large carnivores
- 4) Develop a Communication Plan





## B. Core actions



- 1) Promote best practices of large carnivore management and conservation and facilitate transboundary exchange through international multistakeholder conference (B1)
- 2) Involve institutions and authorities in a long-term exchange on instruments and best practice examples of large carnivore management and conservation (B2)
- 3) Promote case studies and best practices on implementation of transboundary monitoring of LC populations (B3)**
- 4) Foster transnational and national information exchange on transboundary cooperation (B4)



## B. Core actions



Increasing communication capacities in two steps:

5) (i) Through training of local conservation actors in consensus-based stakeholder engagement (B5), and

6) (ii) Motivating and engaging stakeholders in continuous dialogue and collaborative activities (B6)



## B. Core actions



Changing attitude on the ground through:

7) (i) Initiating and facilitating peer-to-peer exchange of livestock protection measures between farmers (B7)

**8) (ii) Establishing long-term cooperation with journalists, building networks and exchange information (B8)**

9) (iii) Increasing the sense of ownership through interactive 'Magical Moments Campaign' (B9)





## C. Monitoring of the impact



- 1) Comparative stakeholder and conflict analysis "before" and "after"
- 2) EU wide database for quantitative monitoring of people reached and involved
- 3) Contribution to an EU wide socio-economic impact analysis



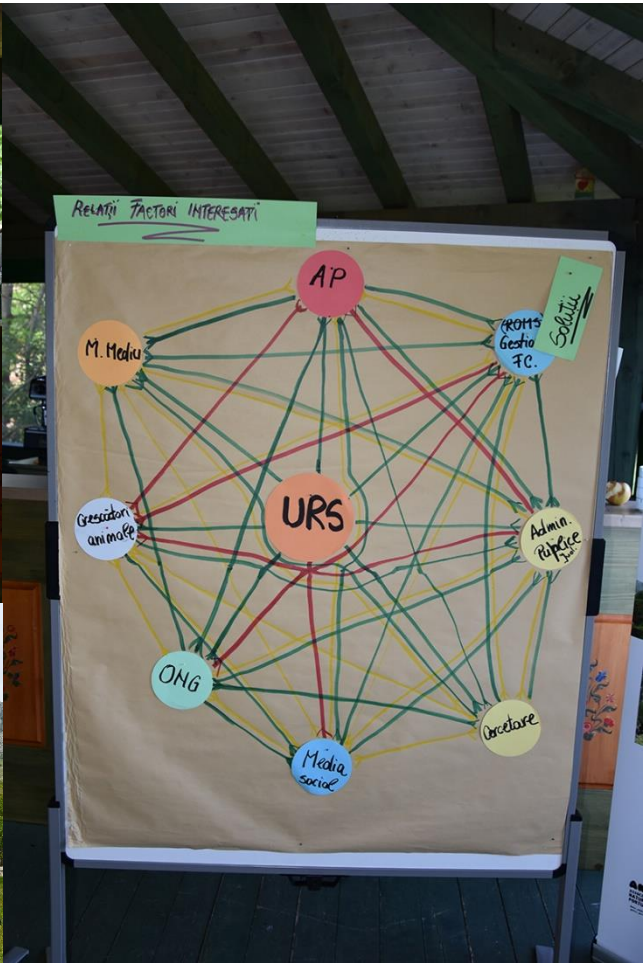
## D. Communication and dissemination



Building on the well established communication instruments and extensive reach of all participating European WWFs, a strong and lasting connection will be made to multinational platforms, macroregional strategies, EU policy implementation responsibilities, and general public in the entire EU



# Ongoing activities: engaging with stakeholders





## Ongoing activities: assessments & analyses



BEAR	2013	2014	2015	2016	2017
EUROLARGECARNIVORES (individuals)	381	419	452	451	<b>499</b>



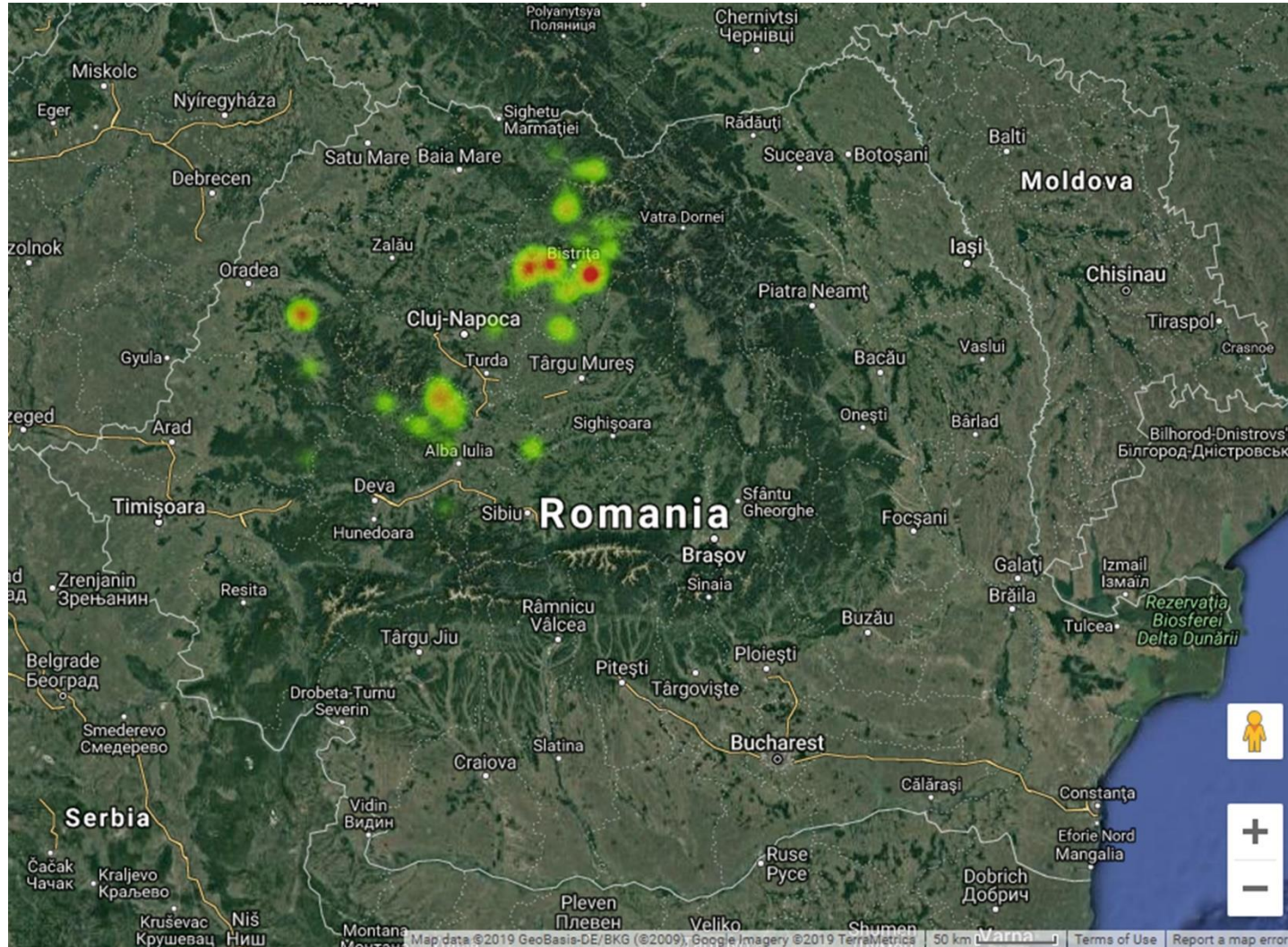
WOLF	2013	2014	2015	2016	2017
EUROLARGECARNIVORES (individuals)	1008	995	1037	956	<b>801</b>



LYNX	2013	2014	2015	2016	2017
EUROLARGECARNIVORES (individuals)	359	359	367	375	<b>295</b>



# Ongoing activities: damages

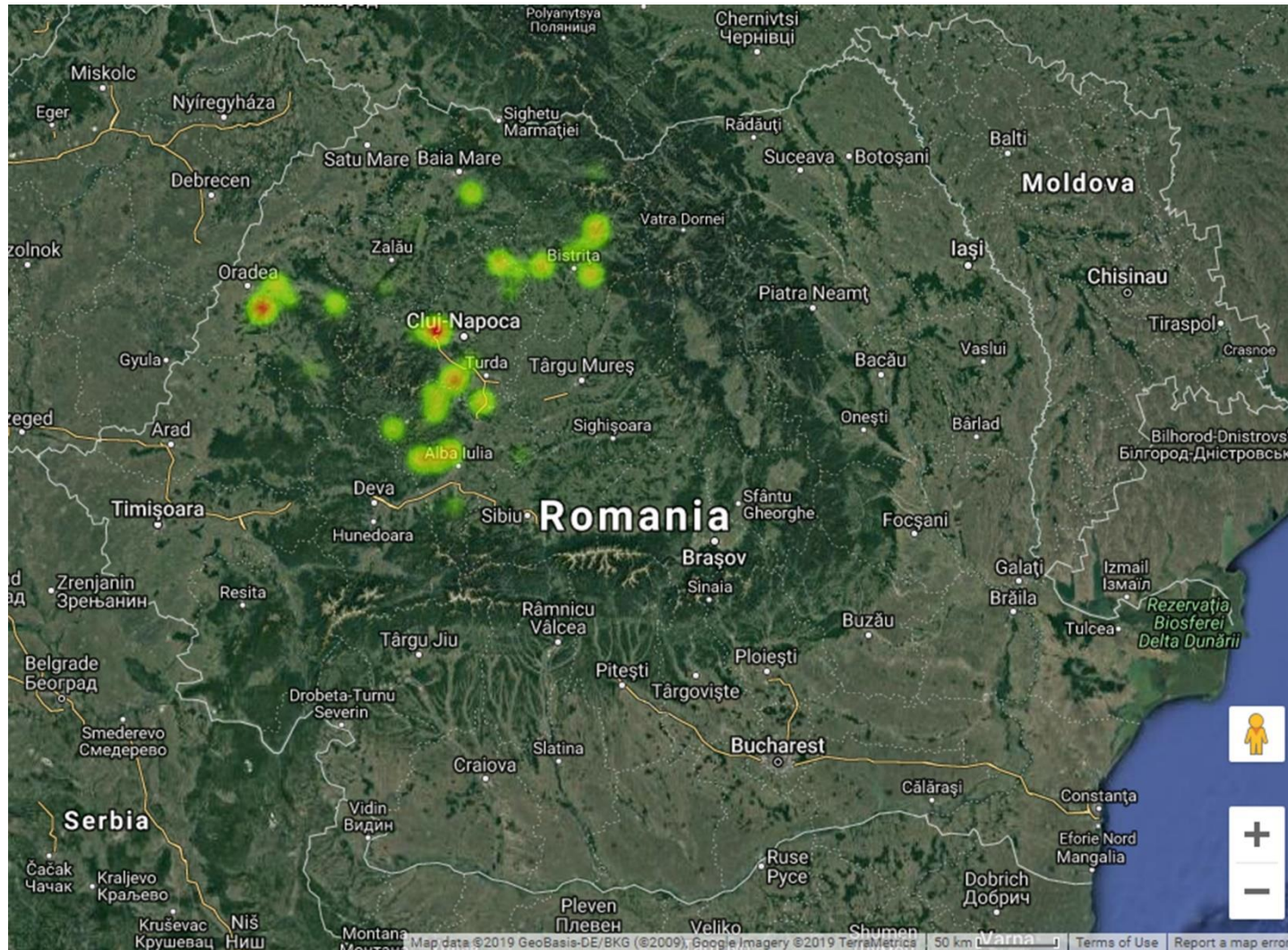


Life EuroLargeCarnivores





# Ongoing activities: damages



Life EuroLargeCarnivores





Filter

Cause = 'wolf' AND Year = 2018 AND Assessment = 'presumed correct'. Summarized by Asset, sorted by 'SUM Value (EUR)'

### Configure pie chart

Change to

#### Category

Asset

Summarize data?

#### Value

Count of Asset

Sum of Value (EUR)

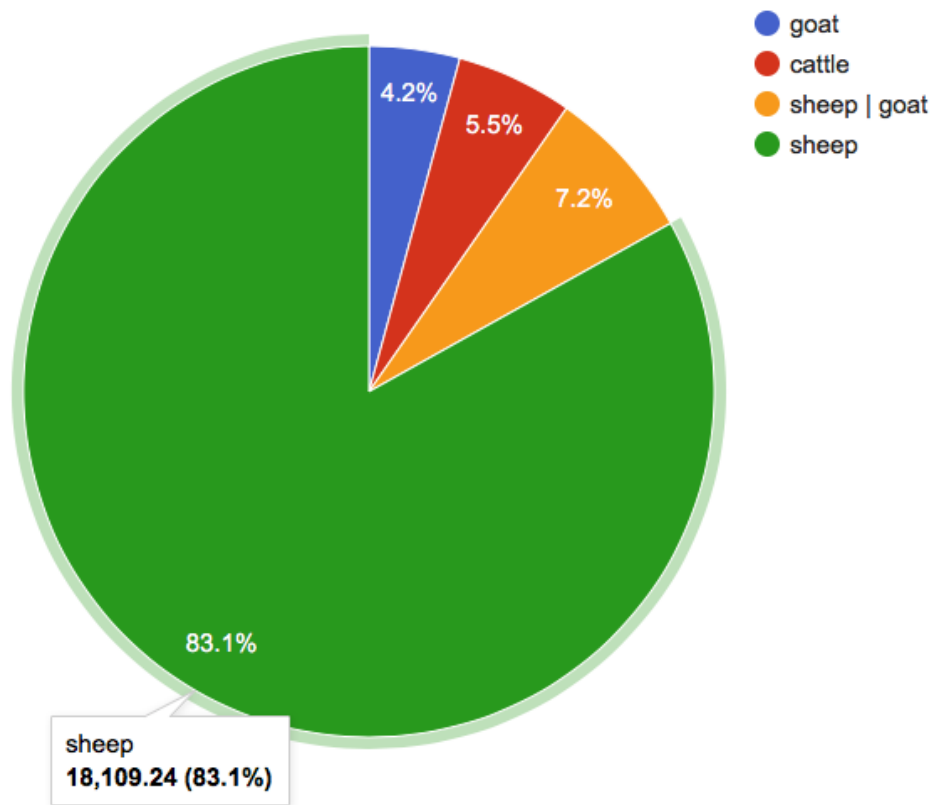
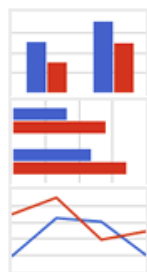
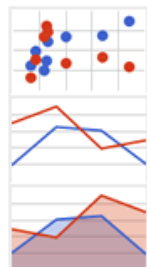
#### Sort by

SUM Value (EUR)

[reverse](#)

#### Maximum slices

10

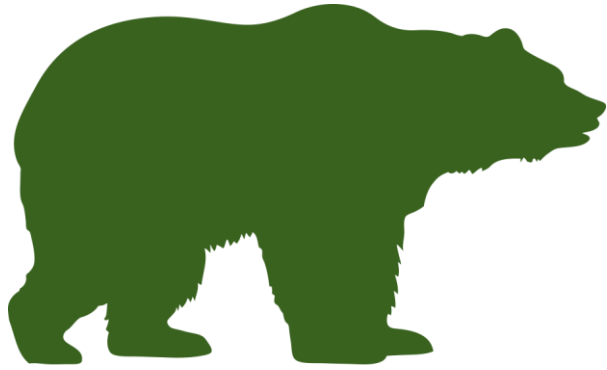


## Activities in 2019



- Press trips
- Round tables (platform, monitoring)
- National workshops (monitoring, illegal killing)
- International (Carpathian) Workshops (monitoring, illegal killing) – **11-14 November 2019, Romania**
- Training (seminars) conflict resolution
- Electric fences installation
- Provide guarding dogs
- Video-collars on bears





Thank you!



Life EuroLargeCarnivores

