



NATURA CONNECT



©Tomas Hulík



Funded by
the European Union

Towards a future coherent Trans-European Nature Network (TEN-N)

9th Carpathian Convention Working Group on Forestry Meeting, online, 16 May 2023

Hildegard Meyer, WWF-CEE



Funded by
the European Union

The Project in a Nutshell

Duration: July 2022 – June 2026, funded by EU Horizon Programme

The **ambition** of NaturaConnect is to co-create with **key decision-makers and stakeholders**, knowledge, tools and capacity building to support **EU Member States** in realizing the **objectives of the EU Biodiversity Strategy for 2030**.

- **30% of land and sea protected, 10% thereof strictly**
 - **Build the Trans-European Nature Network**

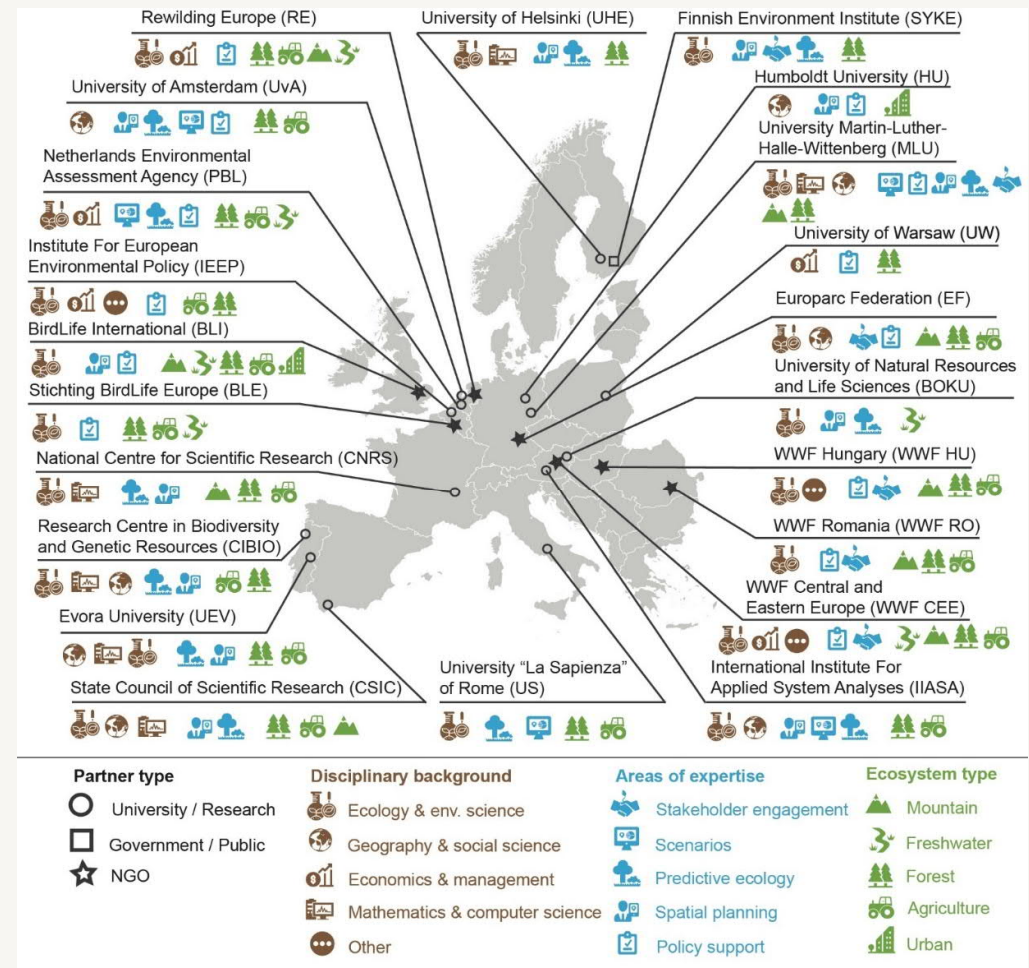
The Consortium

17 Research institutions

5 Policy and practitioner organisations

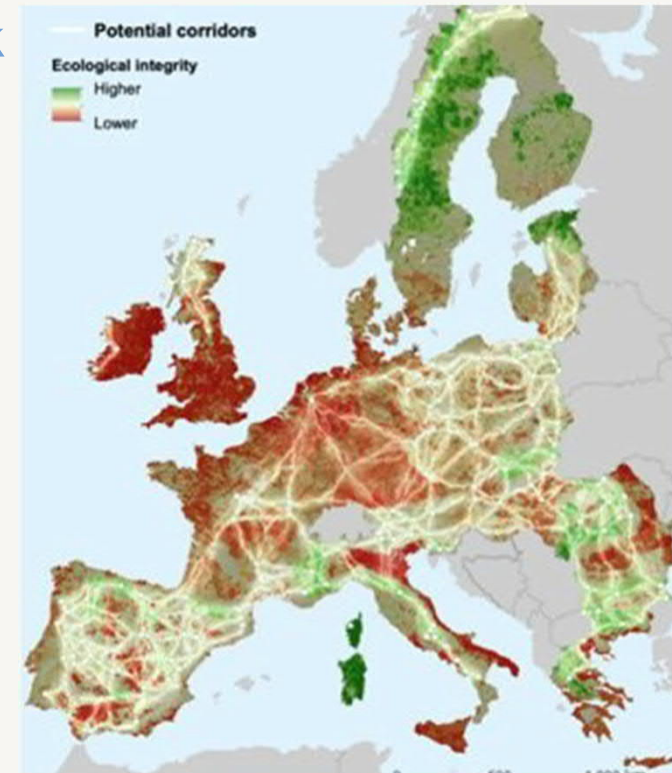
Lead: International Institute for Applied System Analyses (IIASA), AT

Co-lead: Martin-Luther-University, GE



Objectives

1. Define a blueprint for a Trans-European Nature Network (TEN-N) that addresses protected area gaps
2. Identify opportunities for protecting and restoring multifunctional corridors across spatial scales
3. Review and disseminate best spatial planning practices and funding mechanisms
4. Bring together biodiversity and ecosystem service data and predictive models to support the design of TEN-N
5. Engage stakeholders involved in the design and implementation of TEN-N across administrative levels and sectors, co-designing tools and guidelines to maximize the uptake of the project results



Case studies

T8.1 The Danube-Carpathian transboundary region

T8.2 Finland

T8.3 France

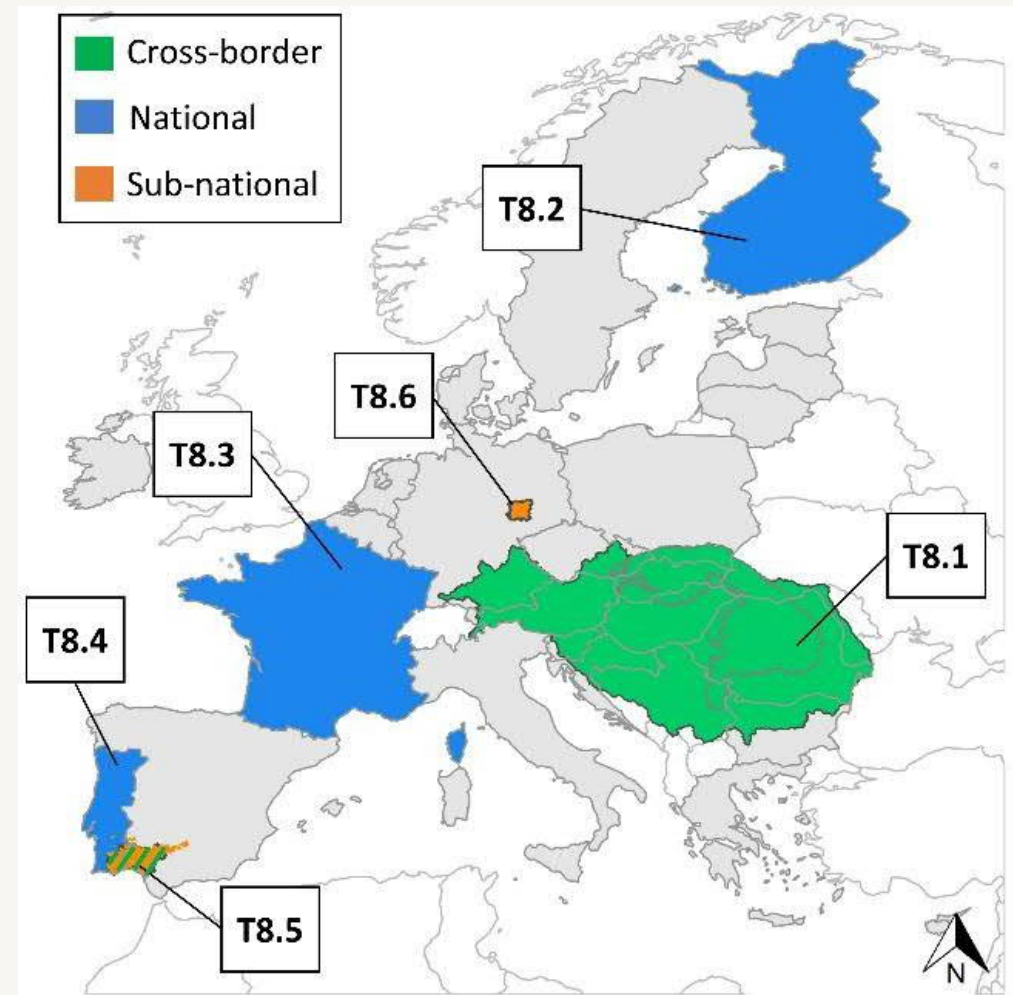
T8.4 Portugal

T8.5 The Doñana region

T8.6 Leipzig-Halle peri-urban floodplains

Working in the region with BOKU (project partner covering scientific work), the Carpathian Convention, the ICPDR and EUSDR

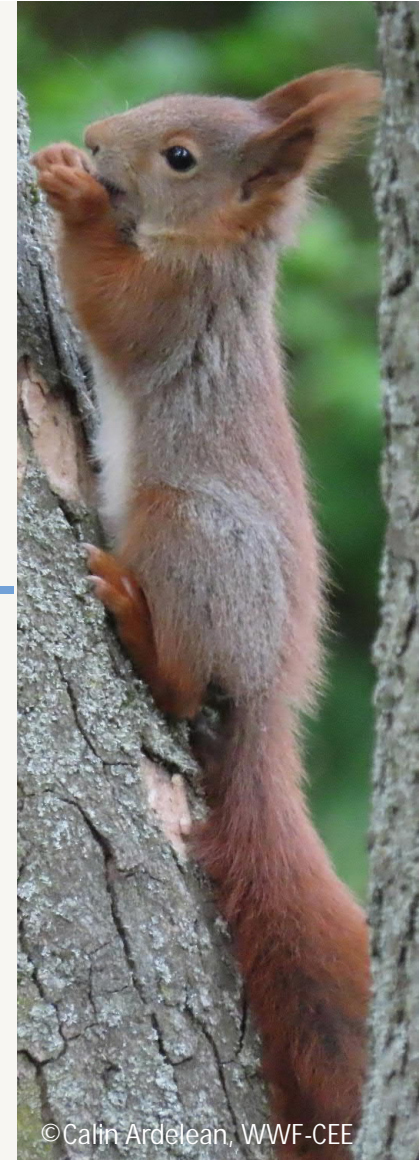
Stakeholder engagement for co-creation



The Role of WWF-CEE

Stakeholder engagement, capacity-building, policy & governance

- **Communication** at all channels
- **NaturaConnect Moodle** including capacity-building and training materials
- Review and synthesis of best practices in **governance and land-use policies** to implement TEN-N (June 2024)
- Factsheets on public, private, and blended **financial support options** for TEN-N and recommendations for each case study (October 2024)
- Engaging with relevant stakeholders for **co-creation of several project deliverables** – we will get in touch with you!
- Dissemination/exploitation of project results in the Danube-Carpathian region



©Calin Ardelean, WWF-CEE

Looking forward to engaging with you!

Hildegard Meyer, hmeyer@wwfcee.org, Cristian-Remus Papp, cpapp@wwf.ro, Irene Lucius, ilucius@wwfcee.org



naturaconnect@iiasa.ac.at, Piero Visconti, visconti@iiasa.ac.at, Nestór Fernandez, nestor.fernandez@idiv.de



www.naturaconnect.eu



@naturaconnect



<https://naturaconnect.eu>