

**Wild game effects:
a major obstacle to transition
from even-aged forestry to
nature-based forest management**

Tibor Standovár

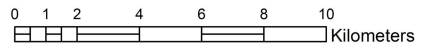
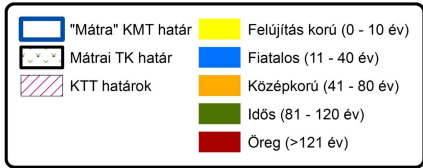
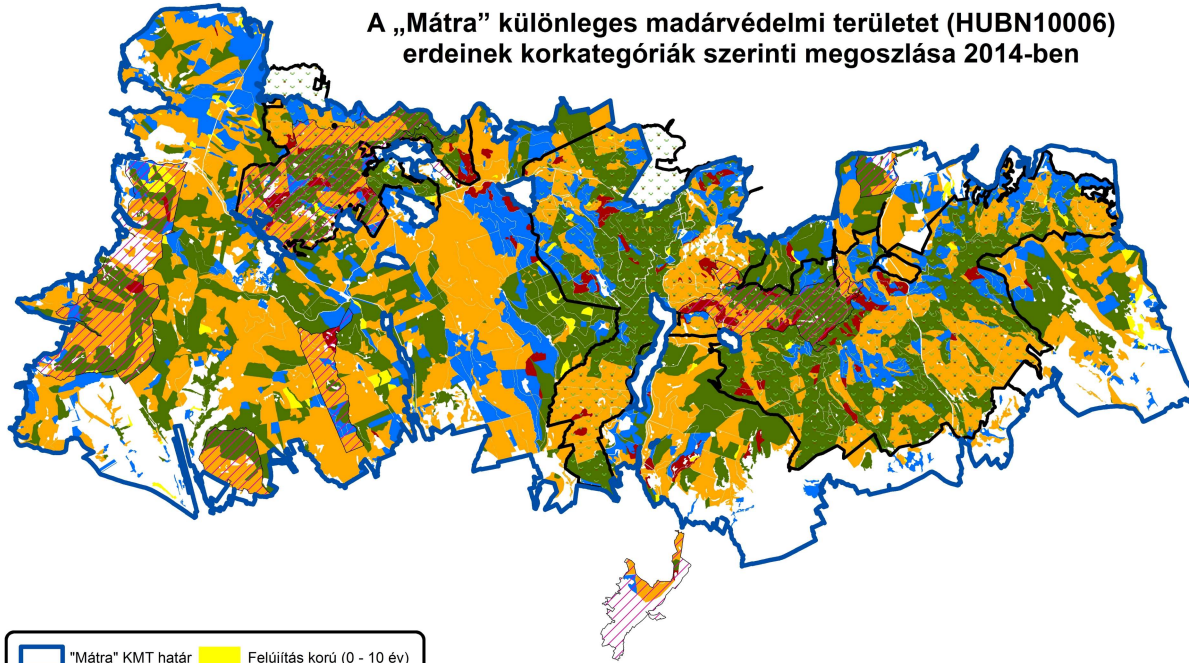
Eötvös Loránd University, Budapest



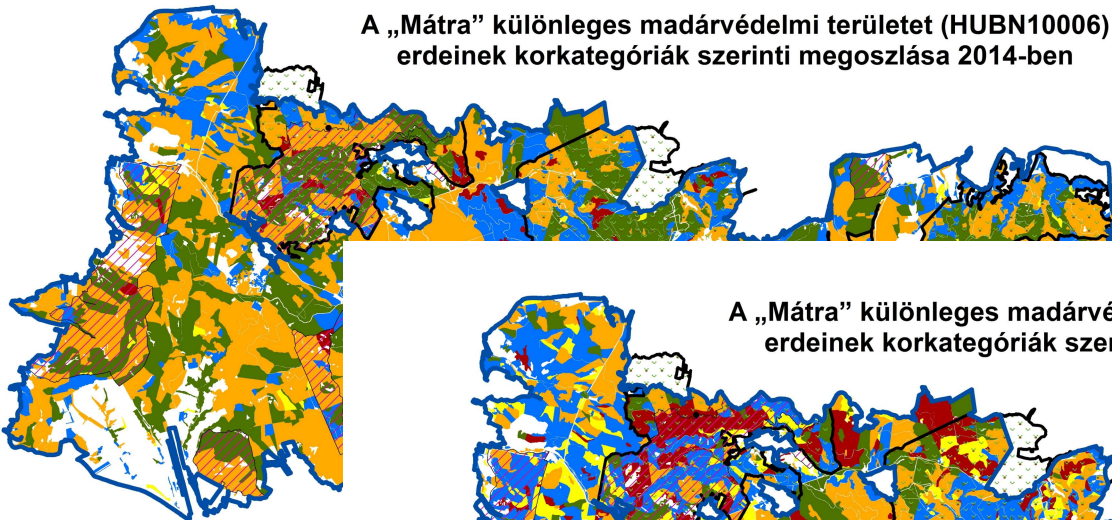
The need for transition

- Inherited age-structure

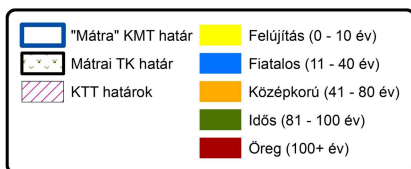
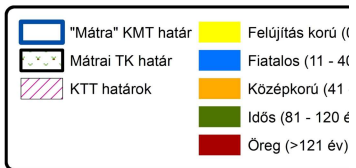
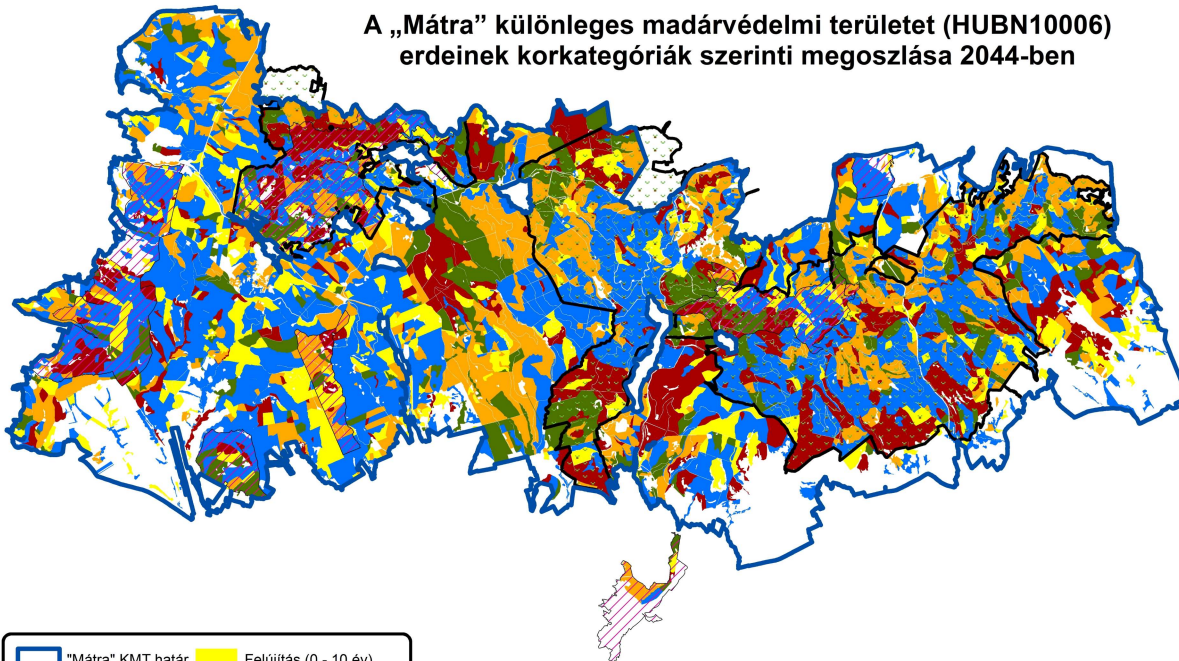
A „Mátra” különleges madárvédelmi terület (HUBN10006)
erdeinek korkategóriák szerinti megoszlása 2014-ben



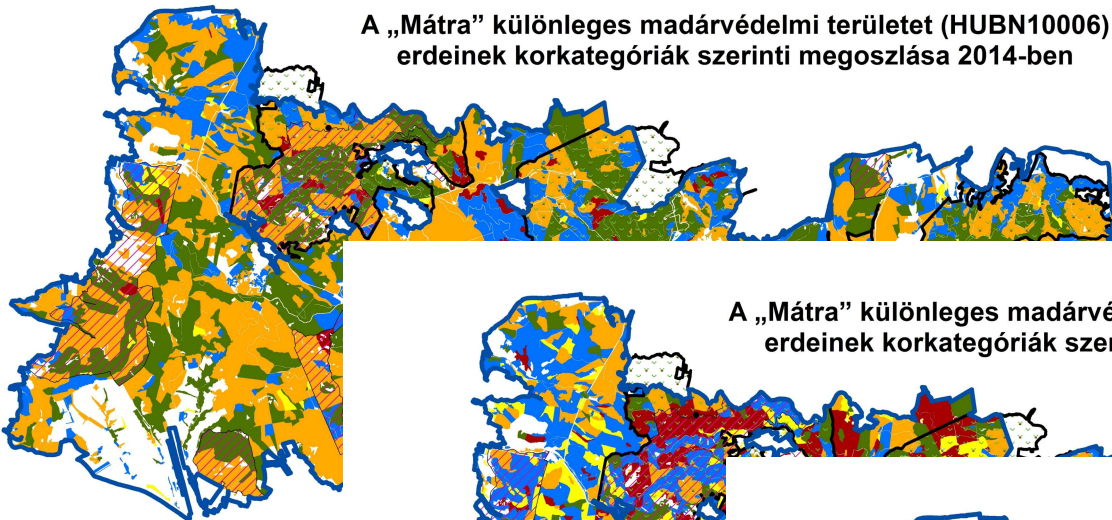
A „Mátra” különleges madárvédelmi terület (HUBN10006) erdeinek korkategóriák szerinti megoszlása 2014-ben



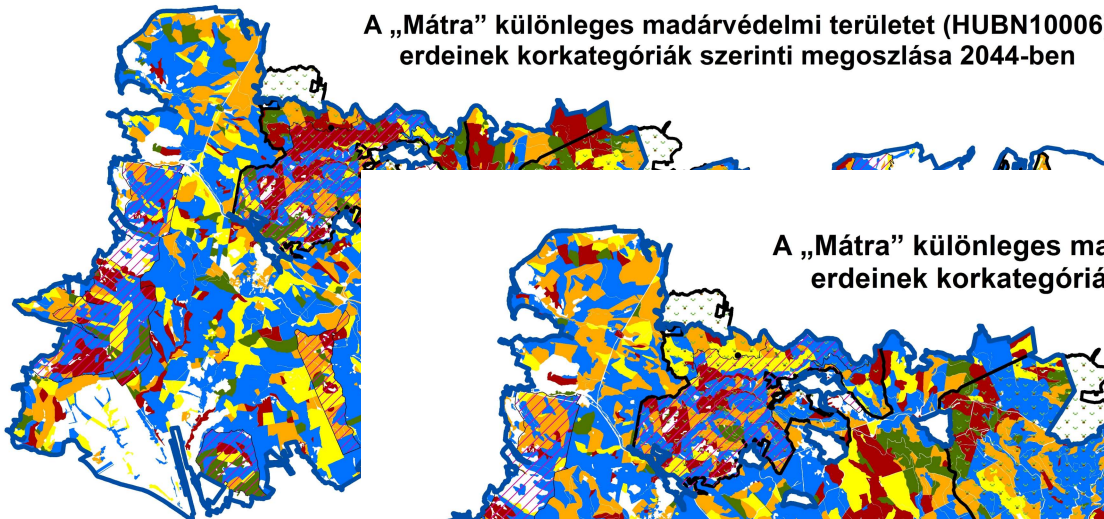
A „Mátra” különleges madárvédelmi terület (HUBN10006) erdeinek korkategóriák szerinti megoszlása 2044-ben



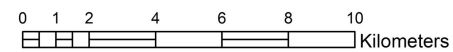
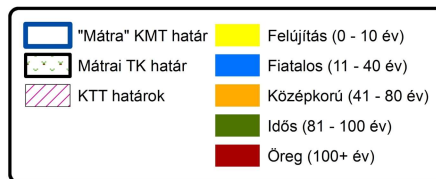
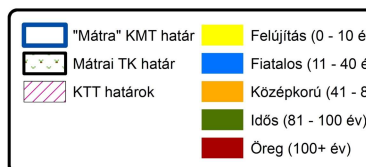
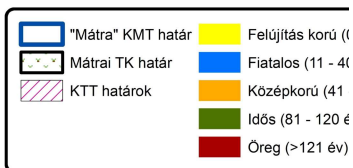
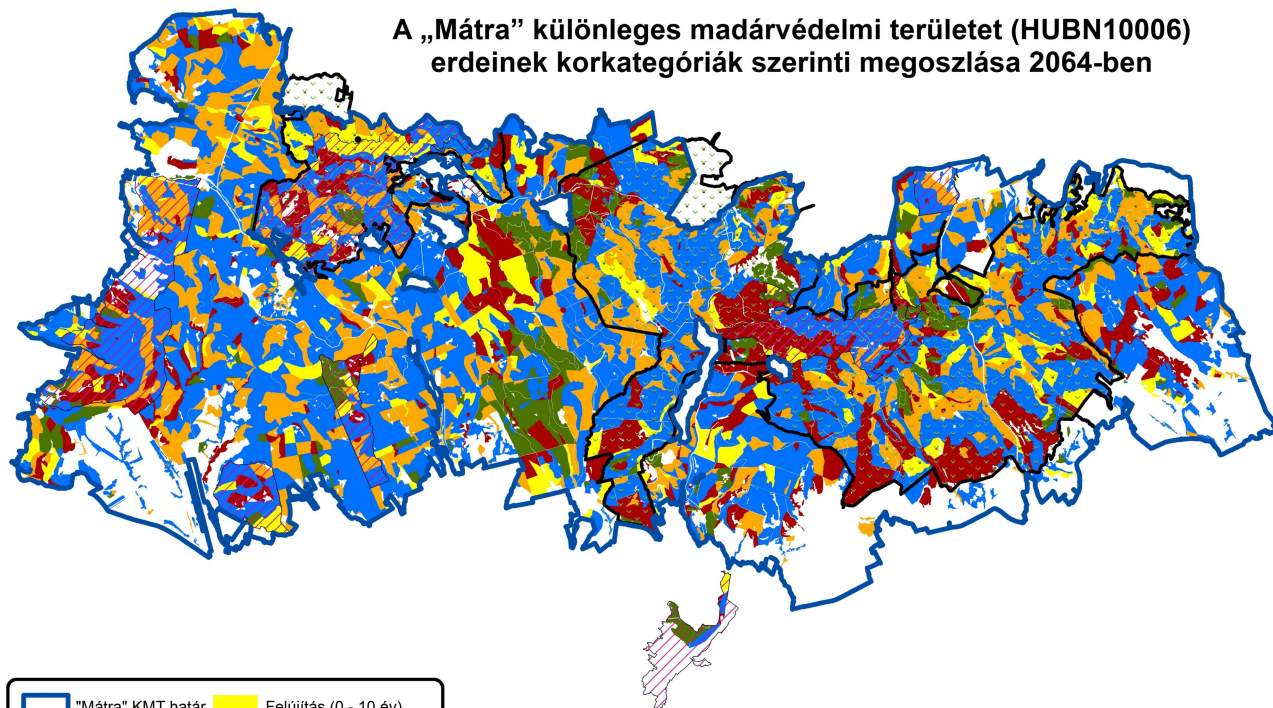
A „Mátra” különleges madárvédelmi terület (HUBN10006) erdeinek korkategóriák szerinti megoszlása 2014-ben



A „Mátra” különleges madárvédelmi terület (HUBN10006) erdeinek korkategóriák szerinti megoszlása 2044-ben



A „Mátra” különleges madárvédelmi terület (HUBN10006) erdeinek korkategóriák szerinti megoszlása 2064-ben



The need for transition

- Inherited age-structure
- Increasing ecological and economic risks

The need for transition

- Inherited age-structure
- Increasing ecological and economic risks
- Changing requirements from society

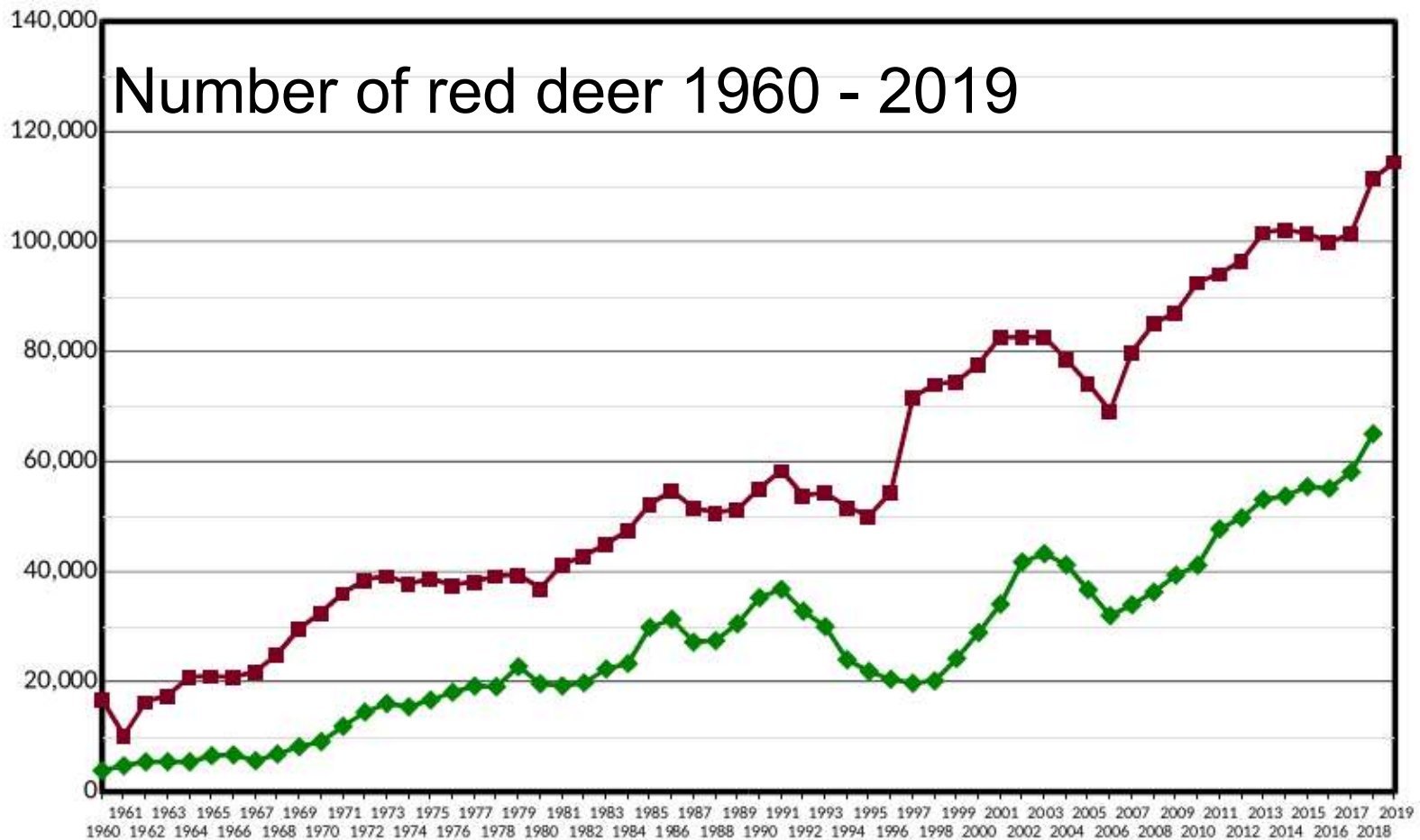
The need for transition

- Inherited age-structure
- Increasing ecological and economic risks
- Changing requirements from society
- Need for more flexible/adaptive forests with high C-storing capacity in the era of climate change

However, transition IS difficult because of - among other things - high game pressure

Ever increasing problem

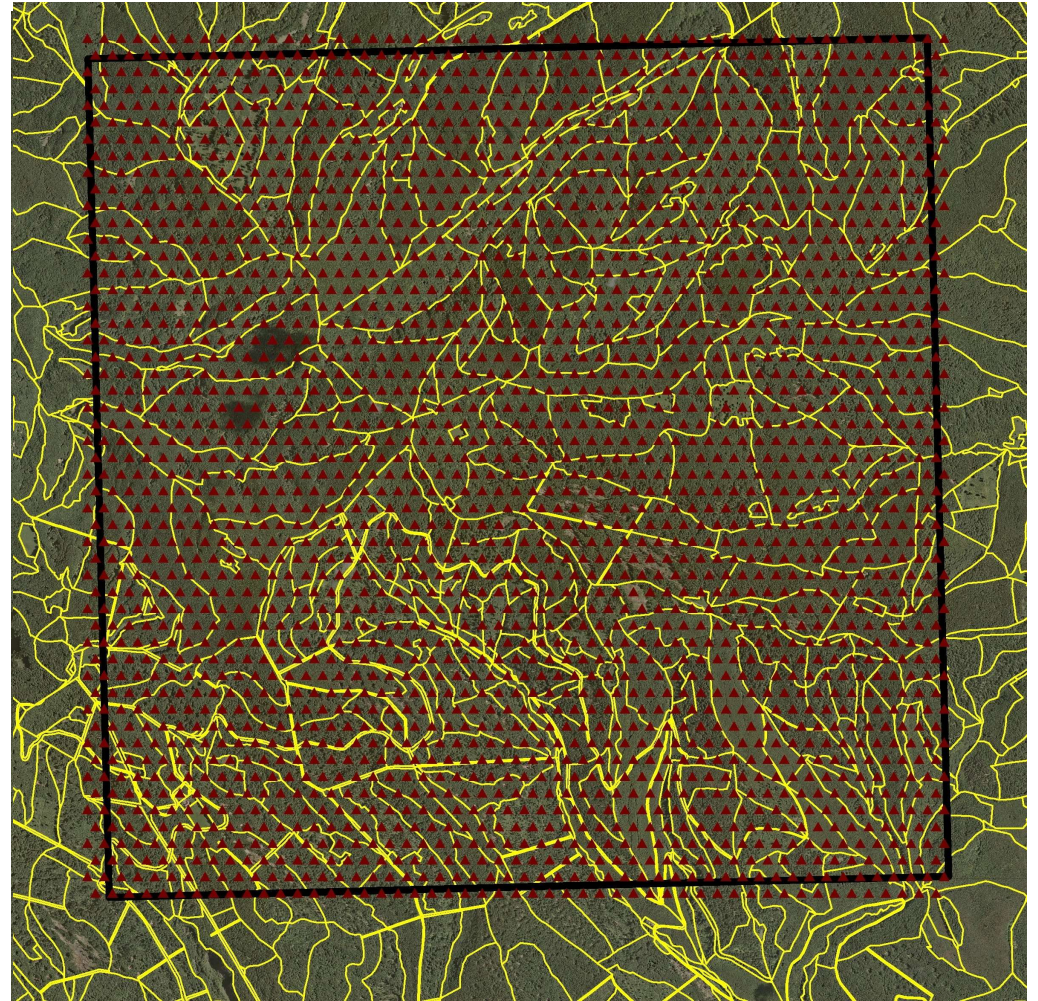
- Foresters complained a lot in the 1960's



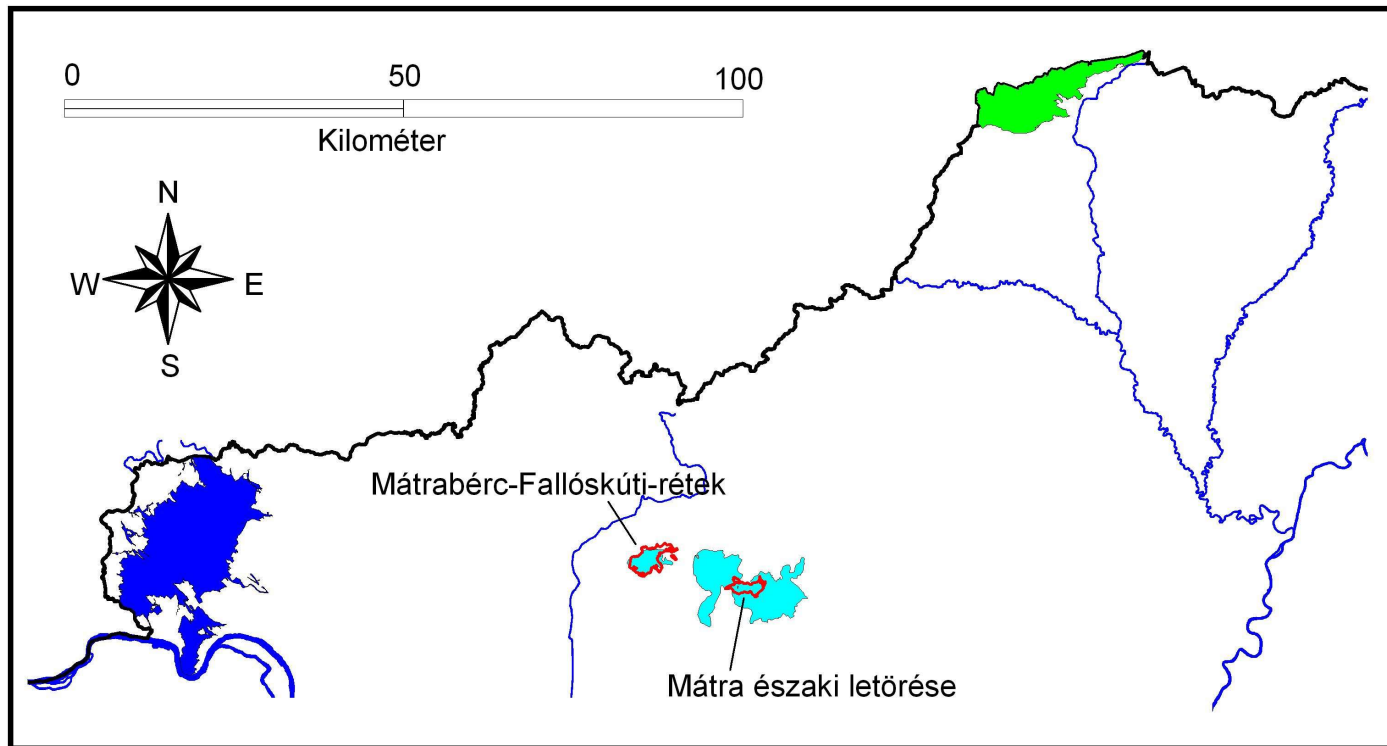
Forest state assessment methodology

Swiss Contribution Project



- Systematic sampling
- Several themes (attributes) to record
- Generation of independent thematic maps showing different aspects of forest structure and function



Sampling areas of forest state assessment

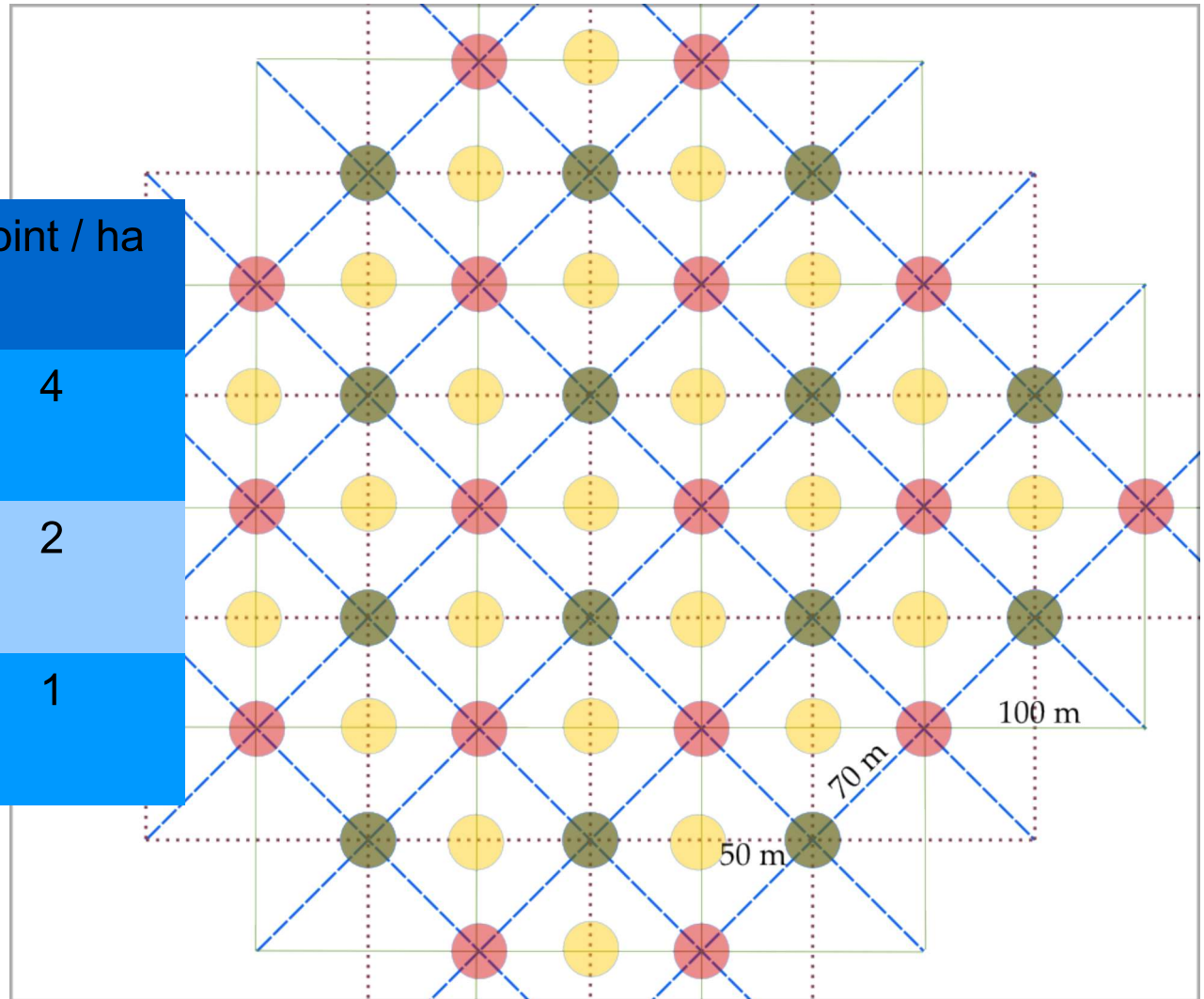


Erdőállapot-felmérés helyszínei (KTT)

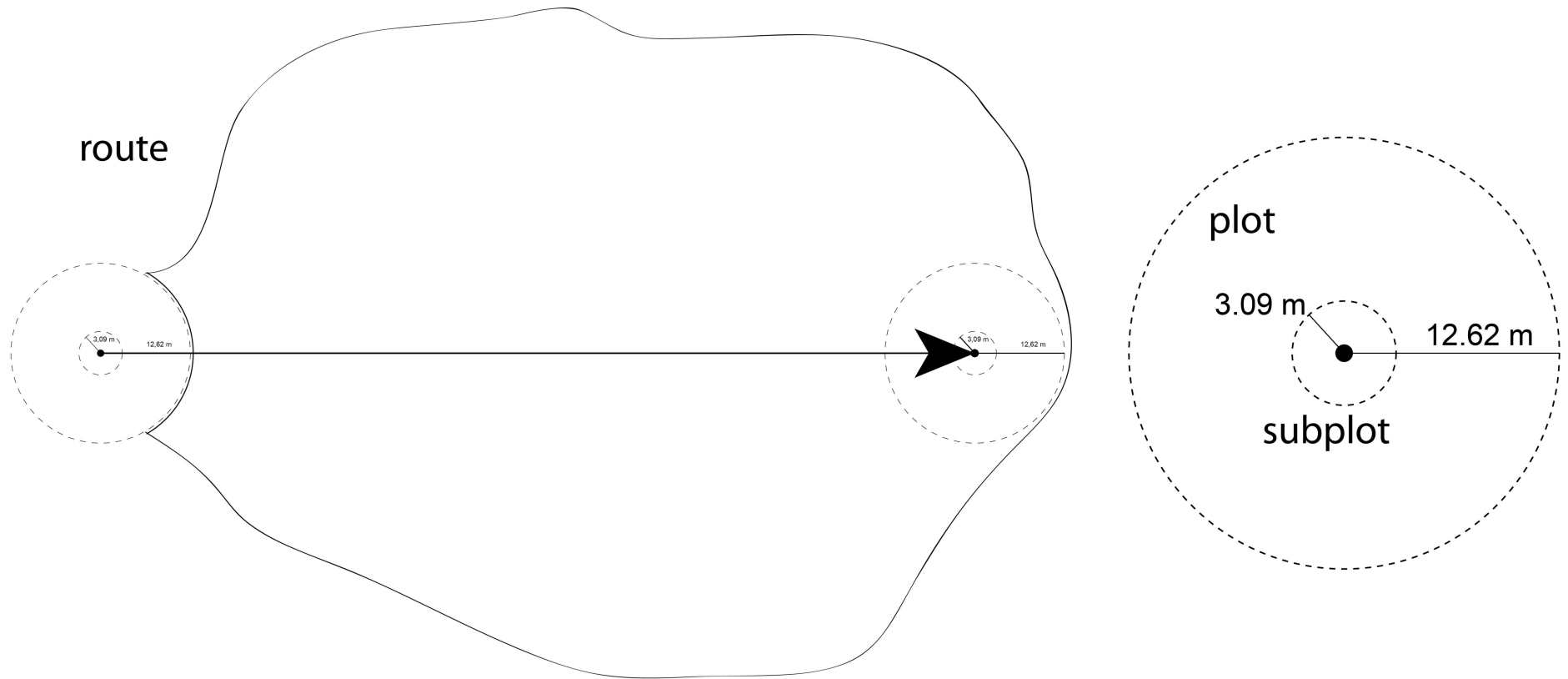
-  Börzsöny
-  Mátra Tájvédelmi Körzet
-  Aggteleki-karszt

Systematic sampling grid

Frequency	represented area	Point / ha
50 m	2.500 m ² 20%	4
70 m (70,71m)	5.000 m ² 10 %	2
100 m	10.000 m ² 5 %	1



Sampling units

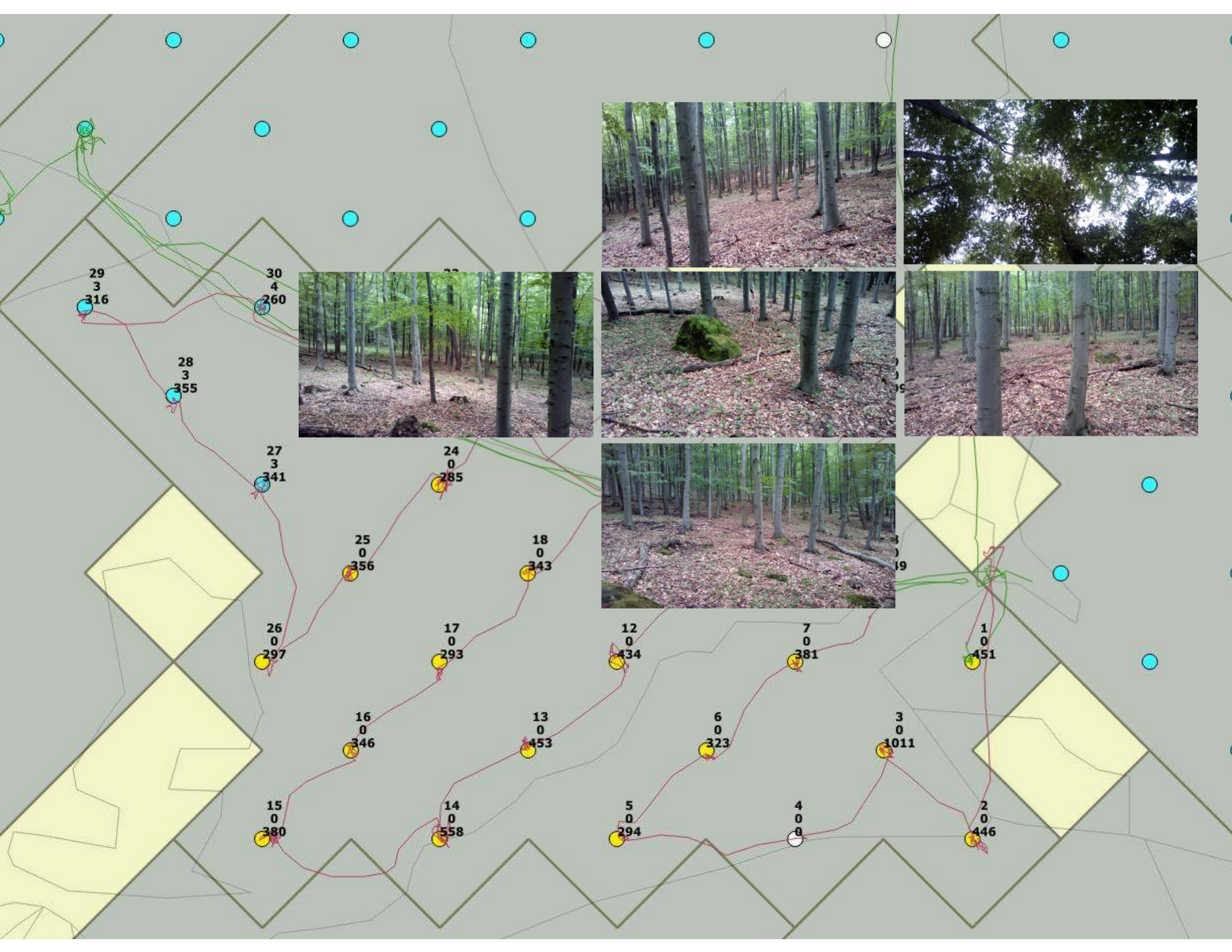


Variables in the protocol

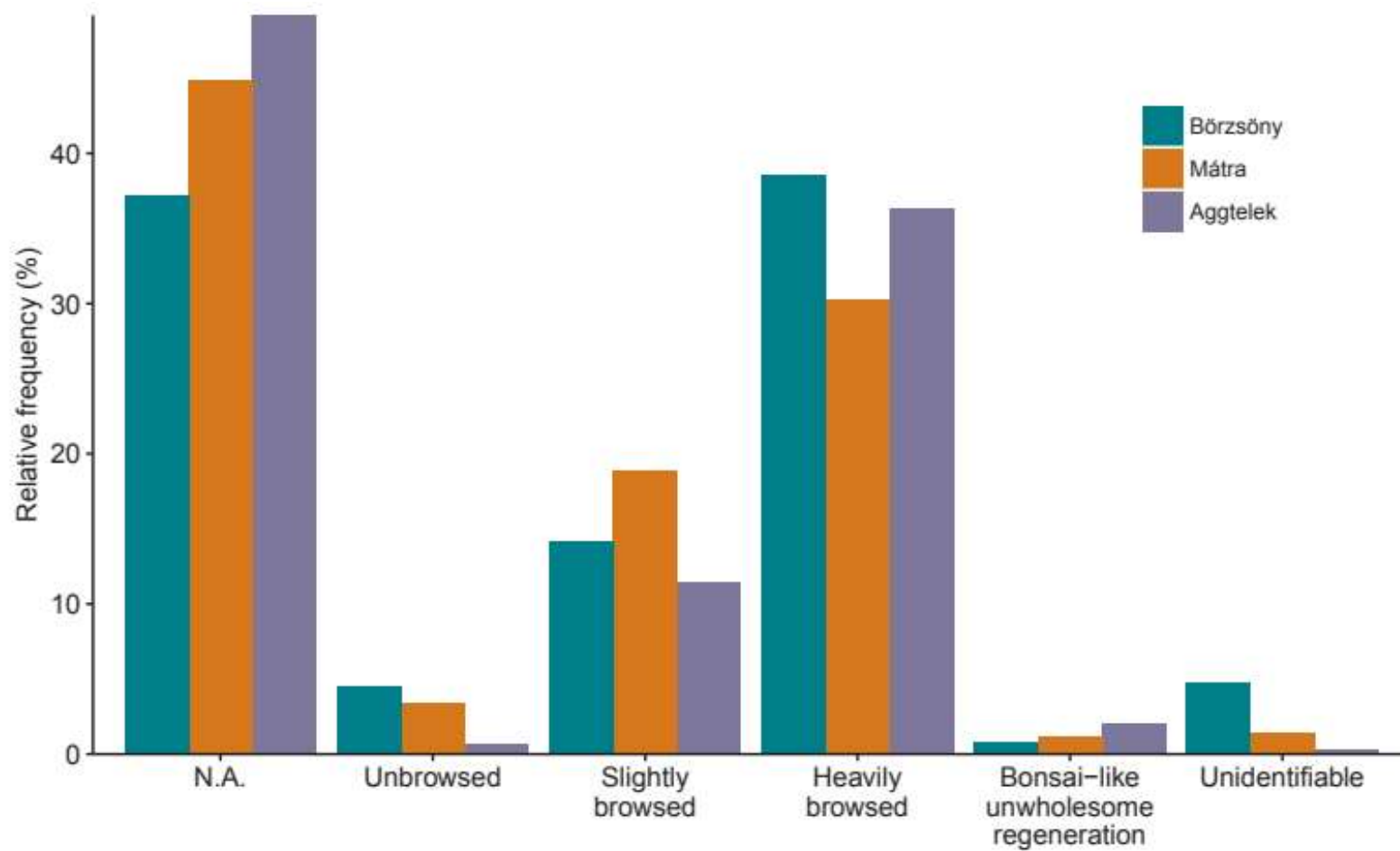
variable group	description
route variables	site related microhabitats, aggressive tree species etc.
canopy	cover of species in diameter classes
standing dead trees	number in diameter classes, decay, species
down dead wood	quantity and diameter, decay, species
herbs	herb cover, dominant, site and disturbance indicators, adventive

Variables in the protocol

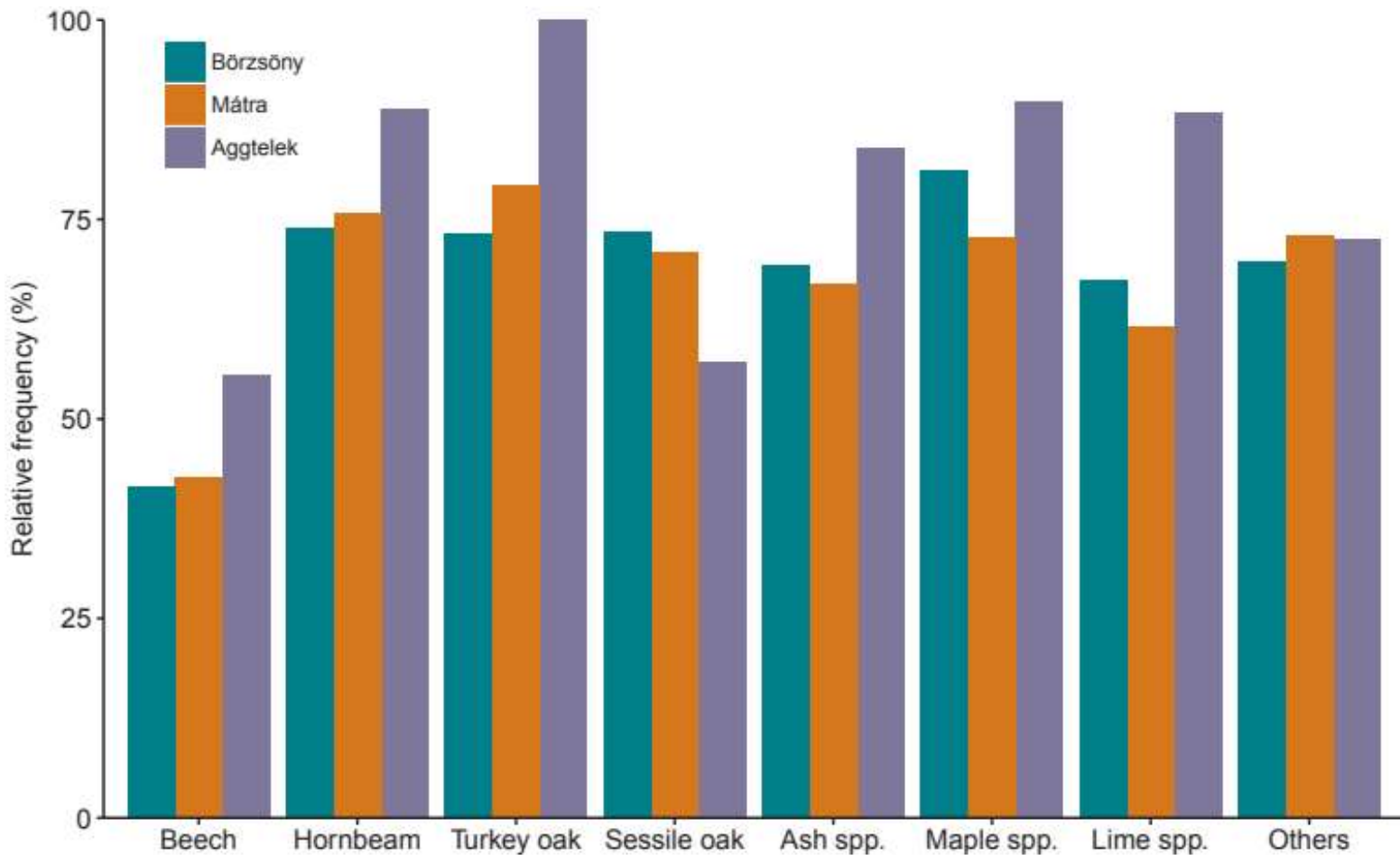
variable group	description
microhabitats and disturbance	tree microhabitats, soil disturbance etc.
shrubs	cover, dominant and site indicators
regeneration	cover, species, browsing
documentation	gps coordinates, photos



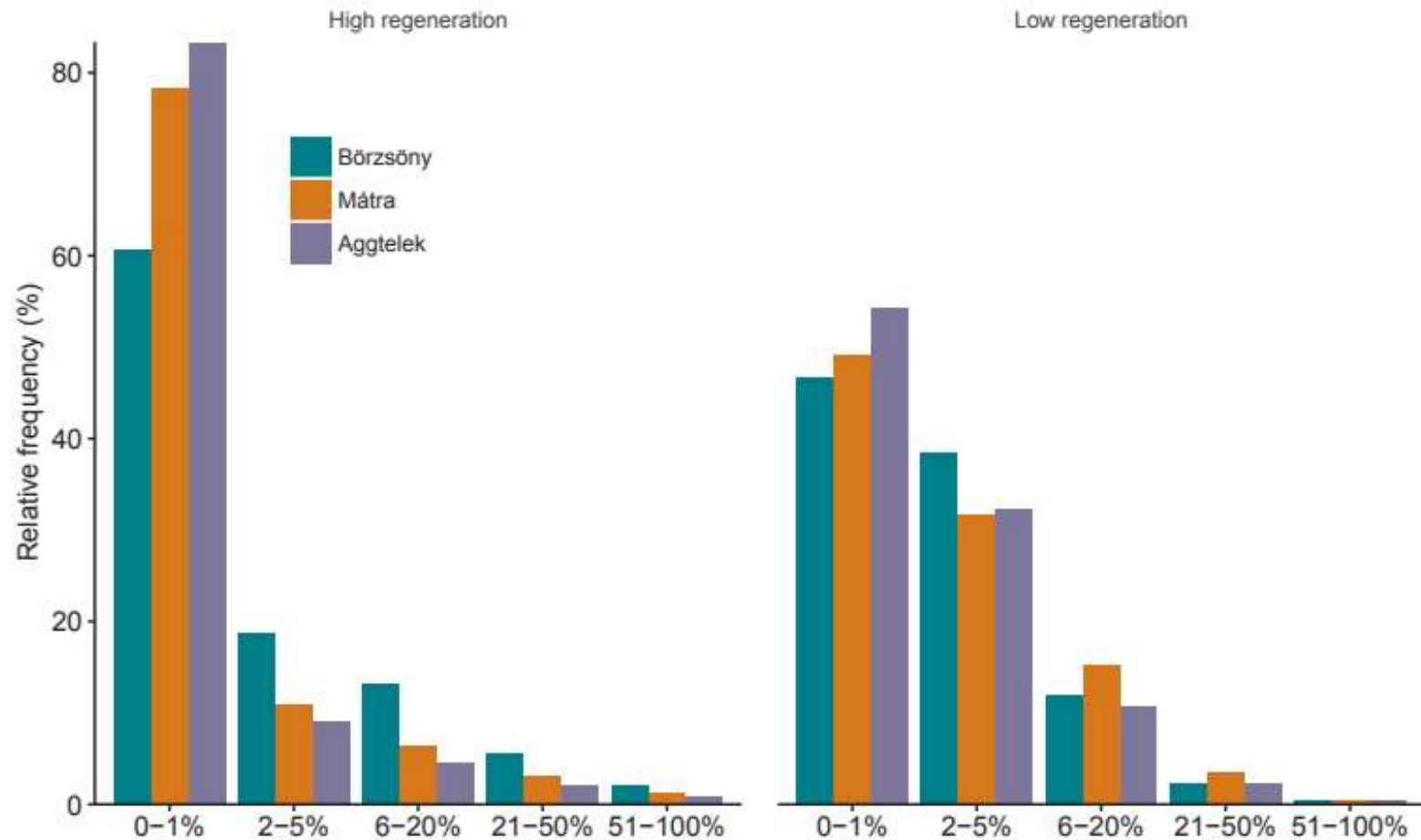
Distribution of browsing categories



"Game benefit?" - preferential browsing



The unbrowsed regeneration





Thank you for your attention!